

Profitable Trend Forex System (PTFS)



All rights reserved. Except for brief quotations in a review of this publication, no part of this publication may be reproduced, stored in a retrieval system, or transmitted in any form or by any means – including electronic, mechanical, photocopy, recording, scanning or otherwise – without the prior written permission of the author.

Disclaimer and Risk Warning:

Trading any financial market involves risk. This e-book and the website www.trendforexsystem.com and its contents are neither a solicitation nor an offer to Buy/Sell any financial market. The contents of this e-book are for general informational purposes only (contents also mean the website www.trendforexsystem.com and any email correspondence or newsletters related to the website).

Although every attempt has been made to assure accuracy, we do not give any expressed or implied warranty as to its accuracy. We do not accept any liability for error or omission. Examples are provided for illustrative purposes only and should not be construed as investment advice or strategy.

No representation is being made that any account or trader will or is likely to

achieve profits or losses similar to those discussed in this e-book. Past performance is not indicative of future results.

By purchasing the e-book, subscribing to our mailing list or using the website you will be deemed to have accepted these terms in full.

The author, the website, the e-book, and its representatives do not and cannot give investment advice or invite customers to engage in investments through this e-book.

We do our best to insure that the website is available 24 hours per day but we cannot be held liable if for any reason the site is not available.

The information provided on this ebook is not intended for distribution to, or use by any person or entity in any jurisdiction or country where such distribution or use would be contrary to law or regulation or which would subject us to any registration requirement within such jurisdiction or country.

Hypothetical performance results have many inherent limitations, some of which are mentioned below. No representation is being made that any account will or is likely to achieve profits or losses similar to those shown. In fact, there are frequently sharp differences between hypothetical performance results and actual results subsequently achieved by any particular trading program.

One of the limitations of hypothetical performance results is that they are generally prepared with the benefit of hindsight. In addition, hypothetical trading does not involve financial risk and no hypothetical trading record can completely account for the impact of financial risk in actual trading.

For example the ability to withstand losses or to adhere to a particular trading program in spite of the trading losses are material points, which can also adversely affect trading results. There are numerous other factors related to the market in general or to the implementation of any specific trading program, which cannot be fully accounted for in the preparation of hypothetical performance results. All of which can adversely affect actual trading results.

We reserve the right to change these terms and conditions without notice. You can check for updates to this disclaimer at any time without notification.

The content of www.trendforexsystem.com and this ebook are copyrighted and may not be copied or reproduced.

1. Components of the System

- Guppy Multiple Moving Average (GMMA) Slow Group (orange color in my illustrated charts)
- Exponential Moving Average (EMA): EMA 20 (magenta) and EMA 30 (magenta)
- Hull Moving Average (HMA): HMA 5 (blue when pointing up, pink when pointing down) and HMA 12 (green when pointing up, purple when pointing down)
- Moving Average Convergence Divergence (MACD):

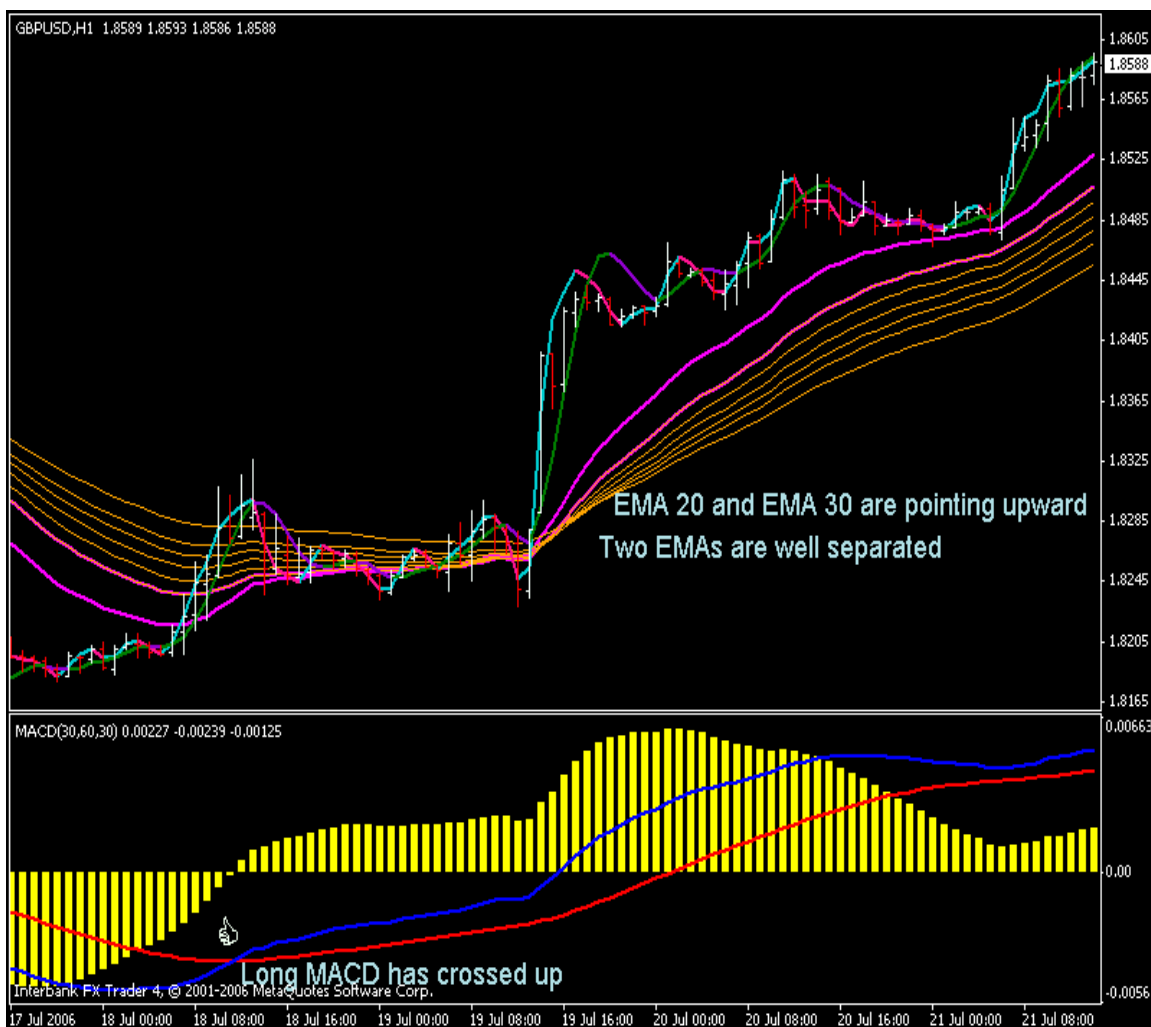
MACD (30,60,30) – we call it long MACD

All indicators for MetaTrader4 are included within the package you have received. If you have any questions regarding how to install indicators, drop me an email.

2. Trend Determination

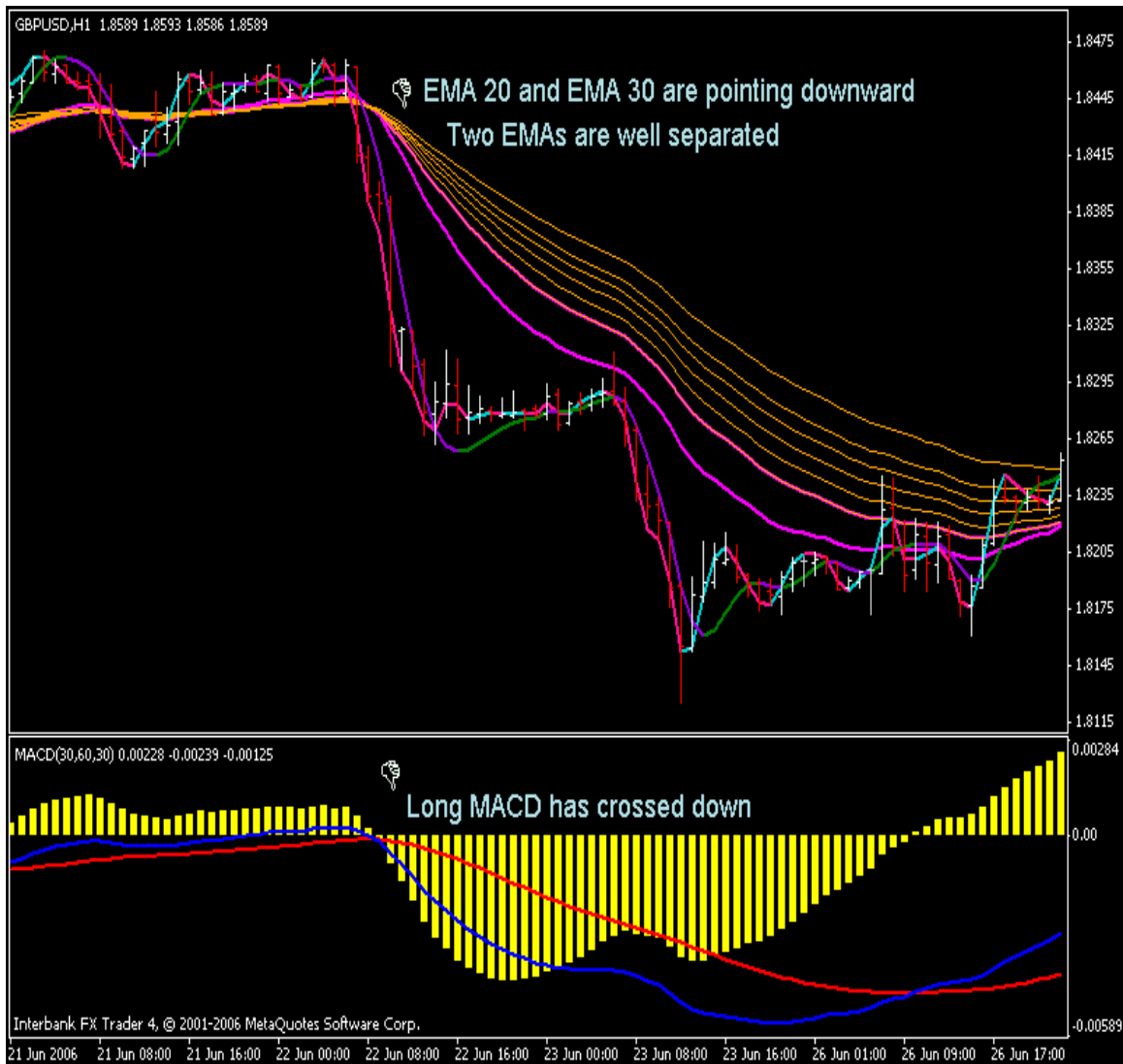
2.1. Uptrend

The trend is regarded as up when long MACD has crossed up and both EMA 20 and EMA 30 are pointing upward and the spread between EMA 20 and EMA 30 is considerably large (the two EMAs are well separated from each other).



2.2. Downtrend

The trend is regarded as down when long MACD has crossed down and both EMA 20 and EMA 30 are pointing downward and the spread between EMA 20 and EMA 30 is considerably large (the two EMAs are well separated from each other).



2.3. Clarification

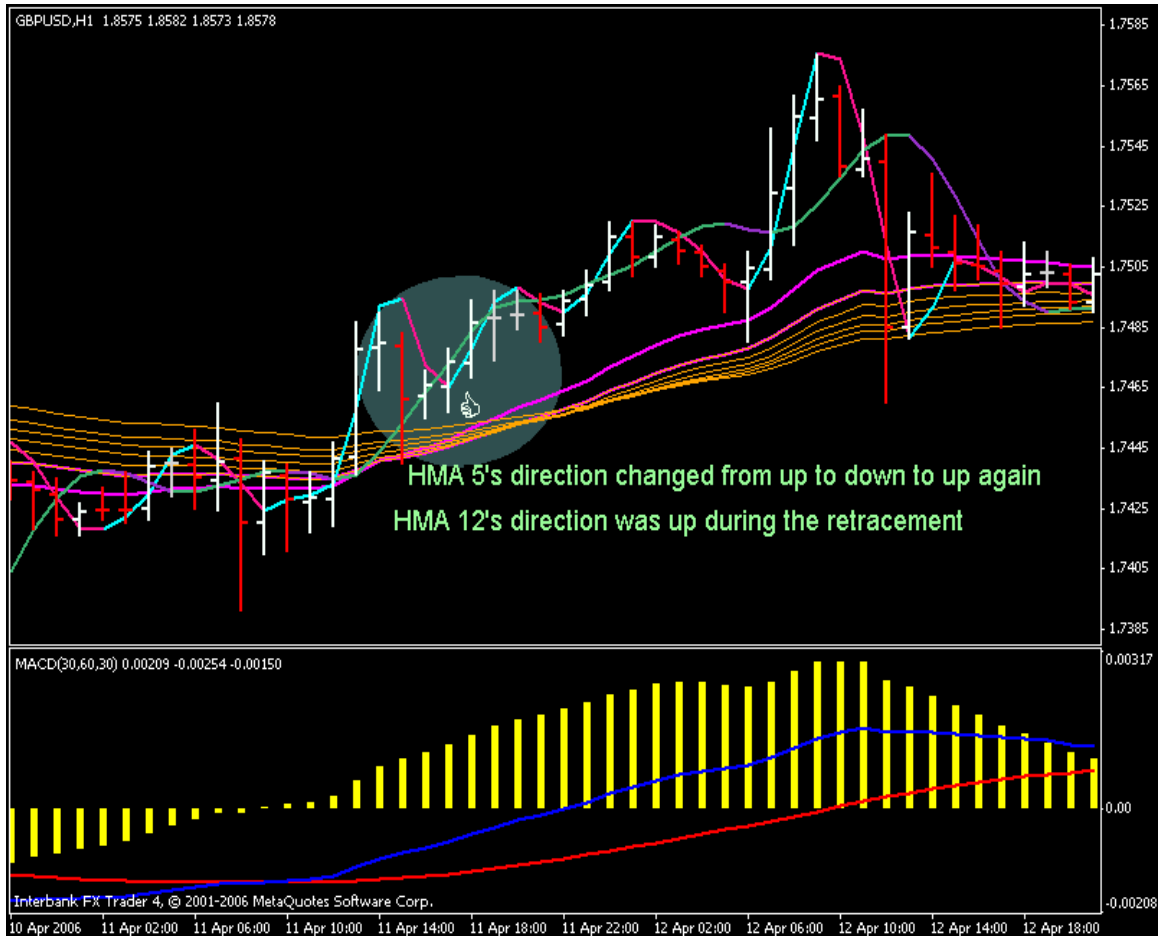
Why is it required that EMA 20 and EMA 30 are well separated from each other? Because if they are close together, the market is probably choppy and therefore whipsaws are likely to occur.

3. Entry signals

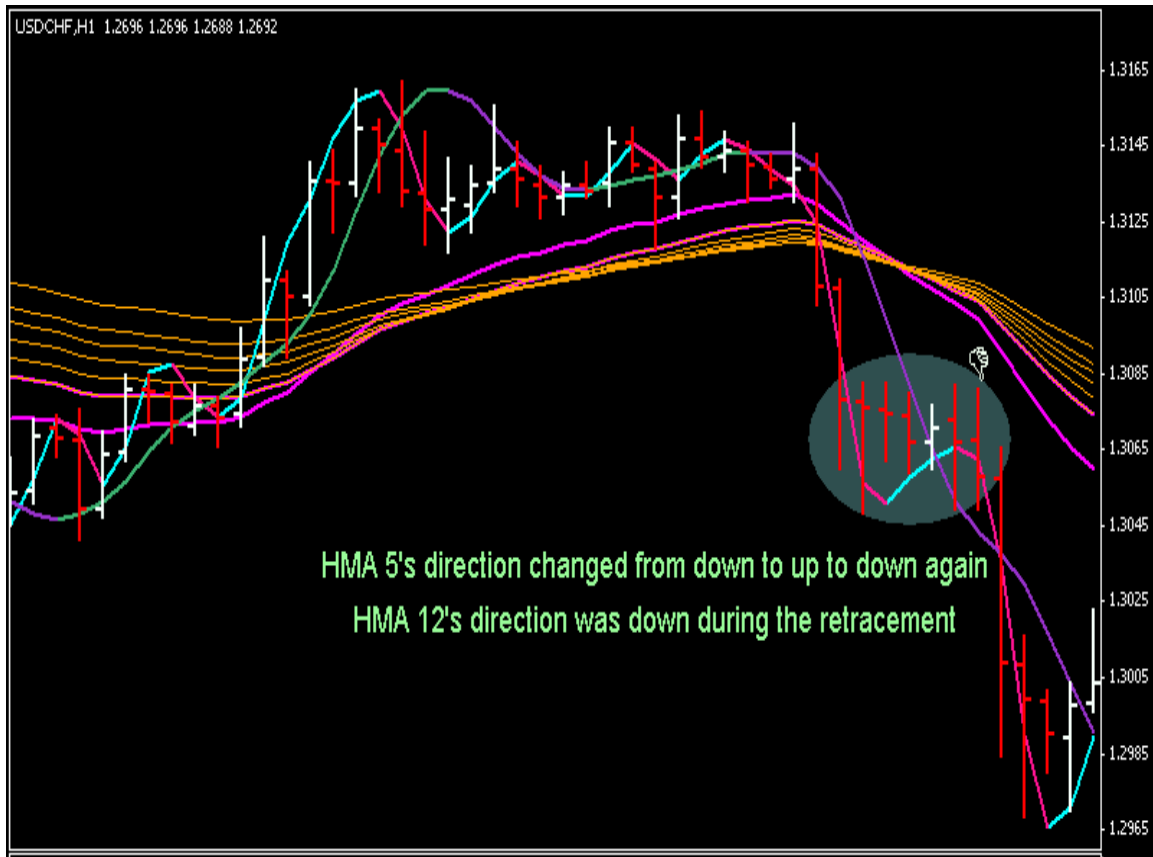
We have two types of entry signals, namely Level 1 (L1) signal and Level 2 (L2) signal. They are described as follows:

3.1. L1 signal

Buy (Go Long): When price is trending up (as defined by our above criteria), we look for a small stall or retracement, and then enter when the trend resumes. Price retraces and makes HMA 5 changes its direction from up to down. We enter when HMA 5 changes its direction from down to up. It signals that the price has resumed its established trend. During the entire retracement, however, HMA 12 direction is still up (i.e. price only retraces a little bit, not enough for HMA 12 slope to change). This is what distinguishes L1 signal from L2 signal.

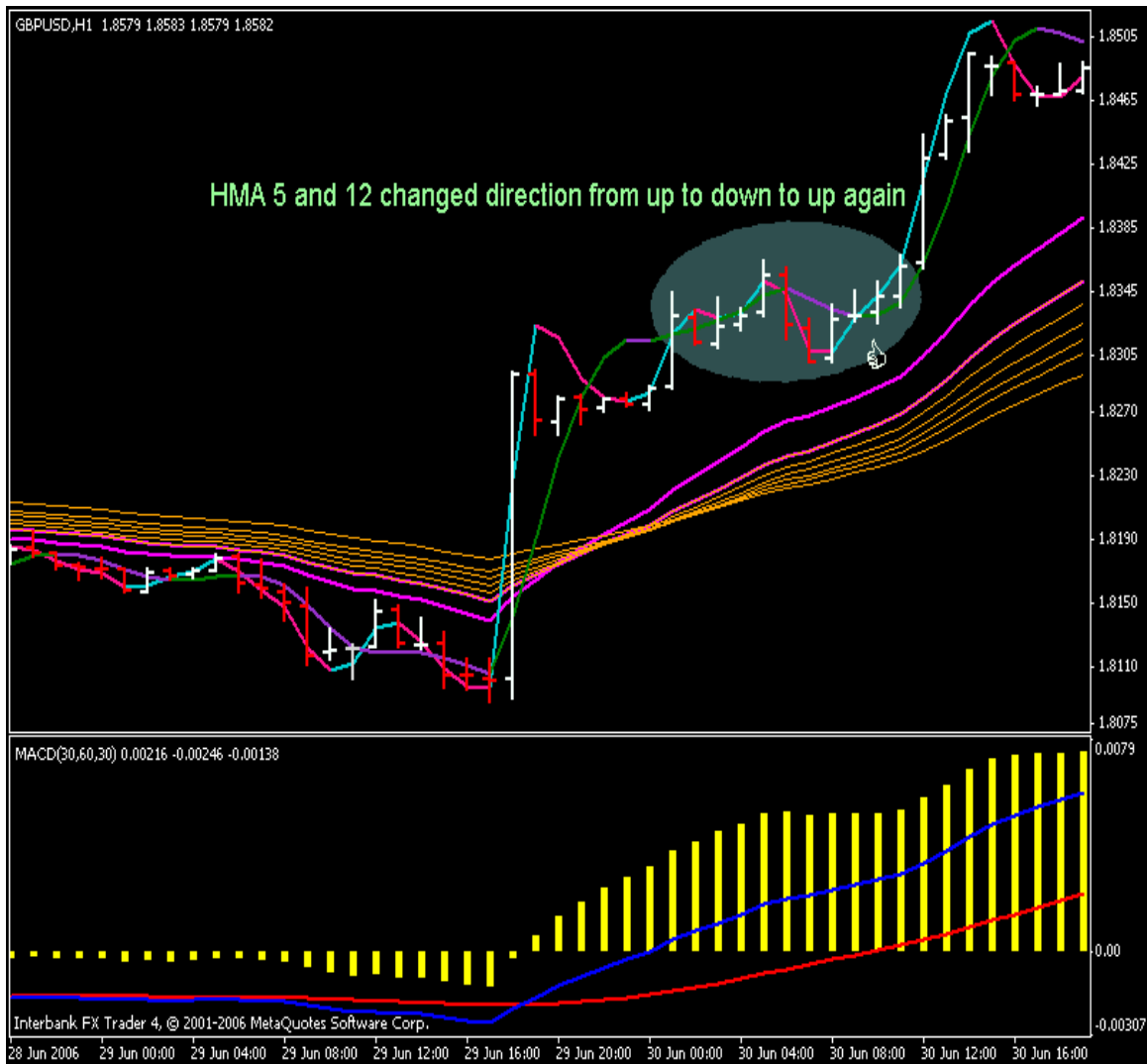


Sell (Go Short): When price is trending down (as defined by our above criteria), we look for a small stall or retracement, and then enter when the trend resumes. Price retraces and makes HMA 5 changes its direction from down to up. We enter when HMA 5 changes its direction from up to down again. It signals that the price has resumed its established trend. During the entire retracement, however, HMA 12 direction is still down (i.e. price only retraces a little bit, not enough for HMA 12 slope to change). This is what distinguishes L1 signal from L2 signal.

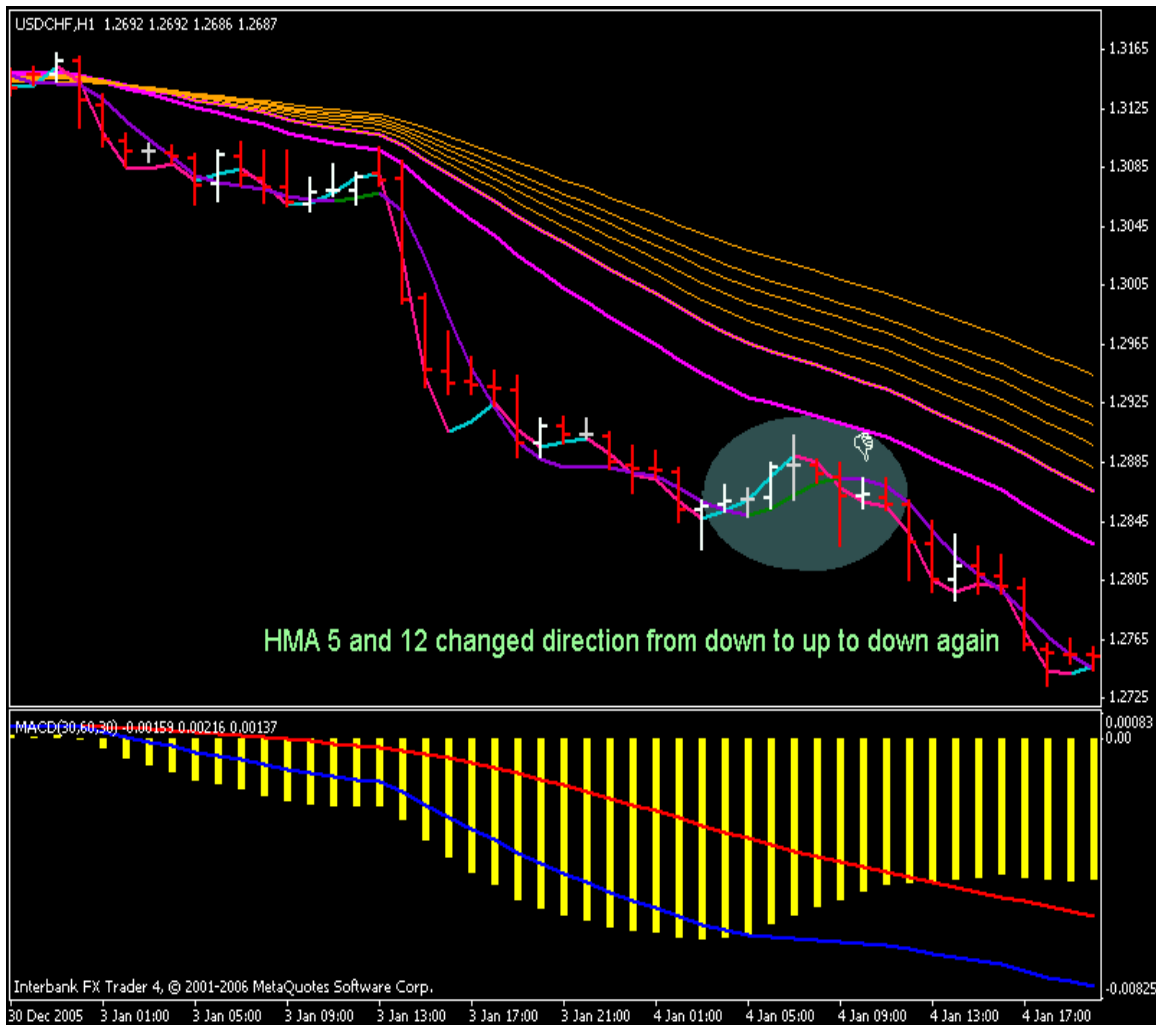


3.2. L2 signal

Buy (Go Long): When price is trending up (as defined by our above criteria), we look for a larger retracement than in L1 signal, and then enter when the trend resumes. Price retraces and makes **both** HMA 5 and HMA 12 changes their direction from up to down. We enter when **both** HMA 5 and HMA 12 changes their direction from down to up. It signals that the price has resumed its established trend.



Sell (Go Short): When price is trending down (as defined by our above criteria), we look for a larger retracement than in L1 signal, and then enter when the trend resumes. Price retraces and makes **both** HMA 5 and HMA 12 changes their direction from down to up. We enter when **both** HMA 5 and HMA 12 changes their direction from up to down. It signals that the price has resumed its established trend.



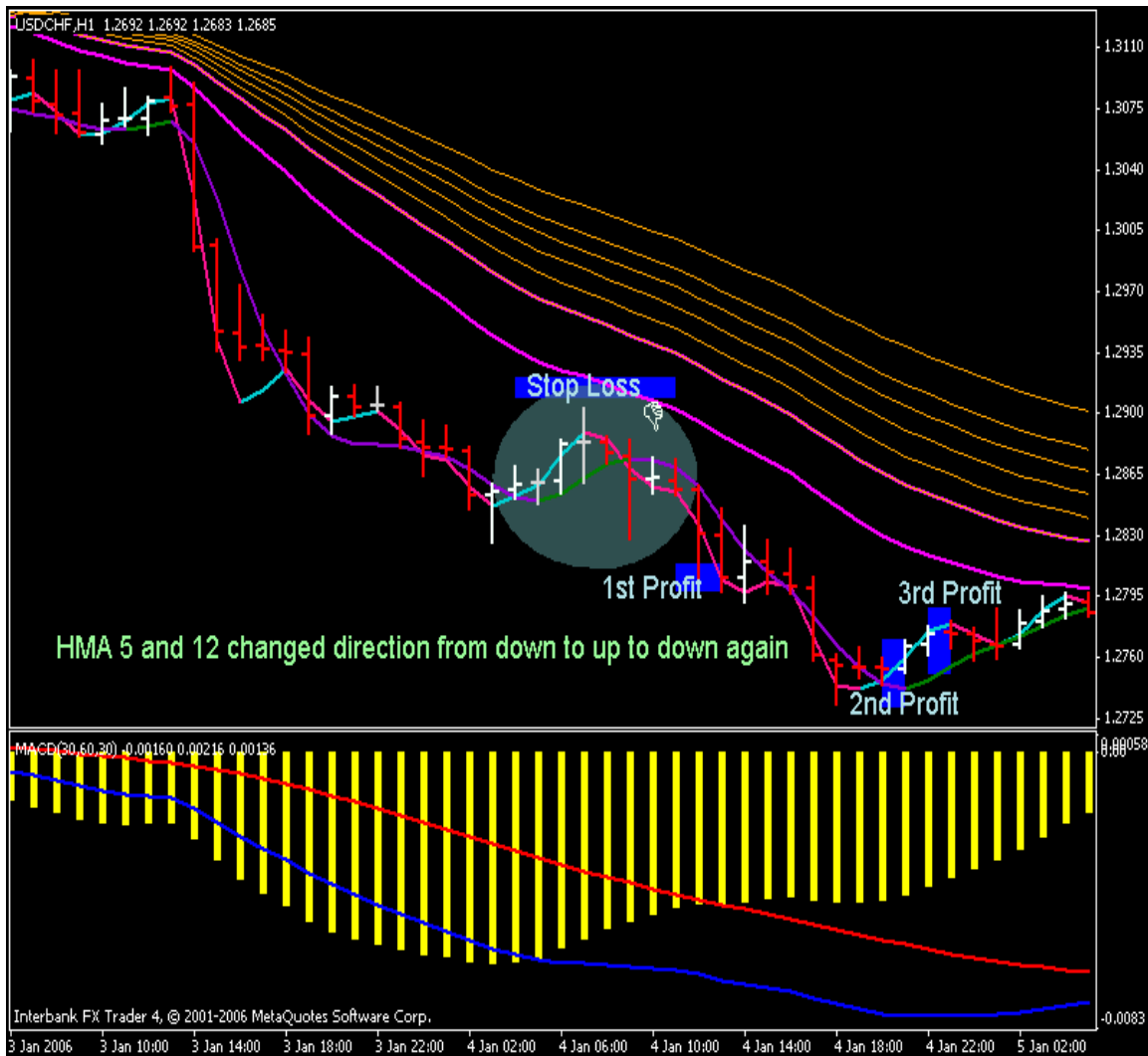
4. Exit Signal and Stop Loss Placement

With each signal, we enter with three lots.

Stop loss is placed as the last swing high/low

If the trade goes in our favor, we exit 1 lot at the same distance as the stop loss. For example, if our stop loss is placed at -40 pips from the entry price, we exit the first lot when we have +40 pips (excluding spread) in profit. As soon as we take the first lot out, we move our stop loss to break-even for the remaining two lots. The second lot is taken out when HMA 5 changes its direction against us (that means in an uptrend we exit the second lot when HMA 5 turns down). The third lot is taken out when HMA 12 changes its direction against us (that means in an uptrend we exit the third lot when HMA 12 turns down).

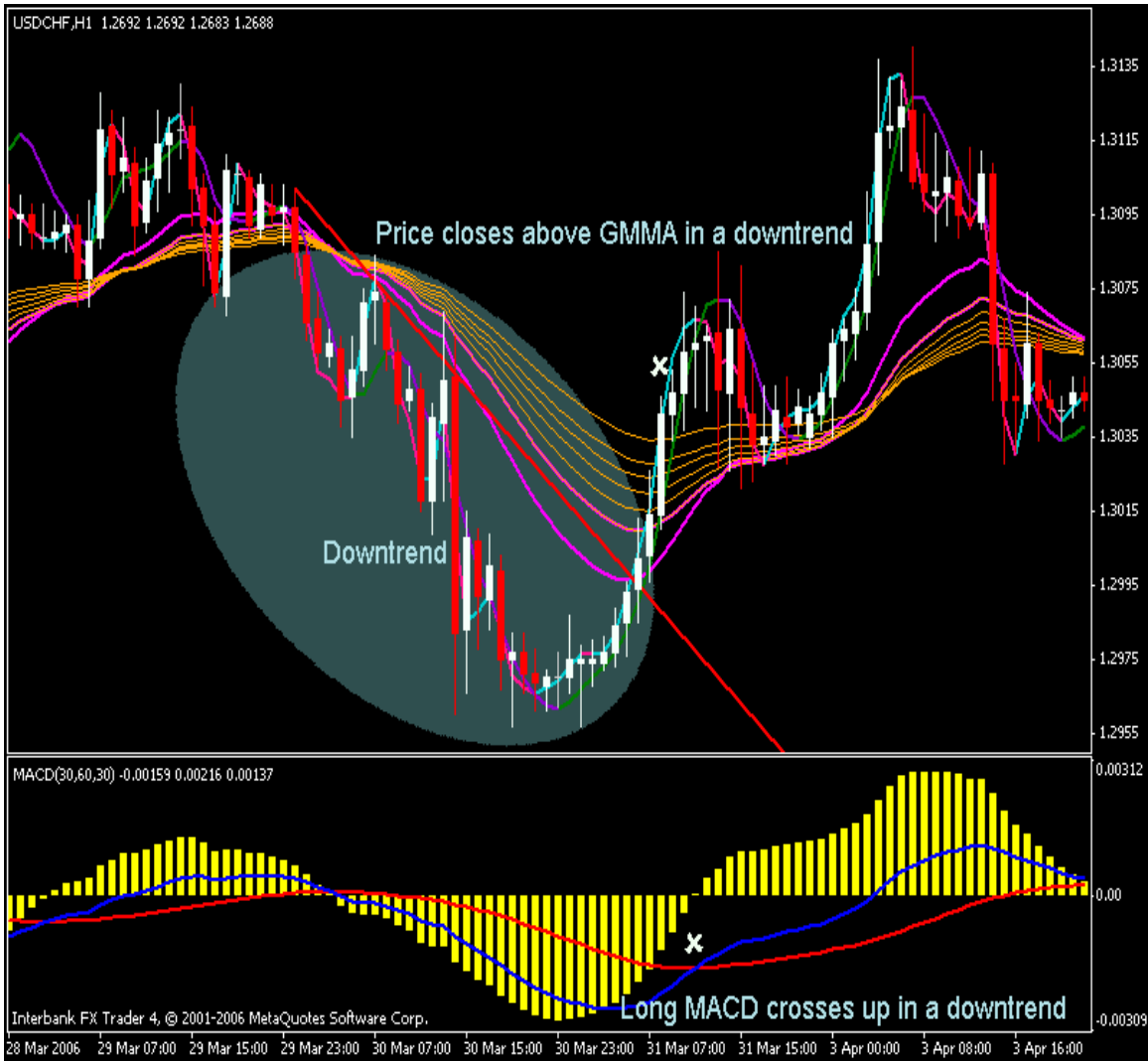
If the trade does not go in our favor, we exit all three lots when HMA 12 changes its direction against us (that means in an uptrend we exit all three lots when HMA 12 turns down) or when our stop loss is hit.



5. Filter

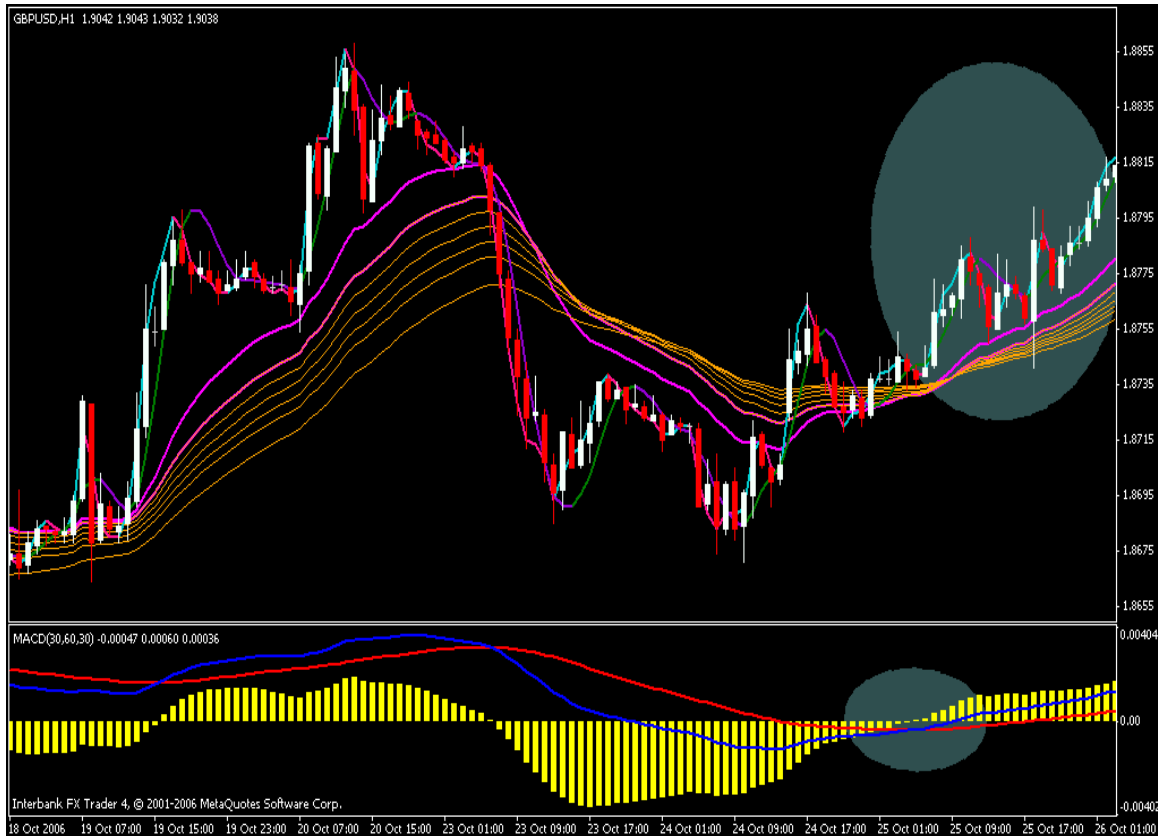
We do not take trades when price has retraced too much and when the trend has lost its momentum. When one of the following conditions takes place, we do not put on any trade until a new trend has established:

- a. Price closes below GMMA in an uptrend or closes above GMMA in a downtrend.
- b. Long MACD crosses down in an uptrend or crosses up in a downtrend.

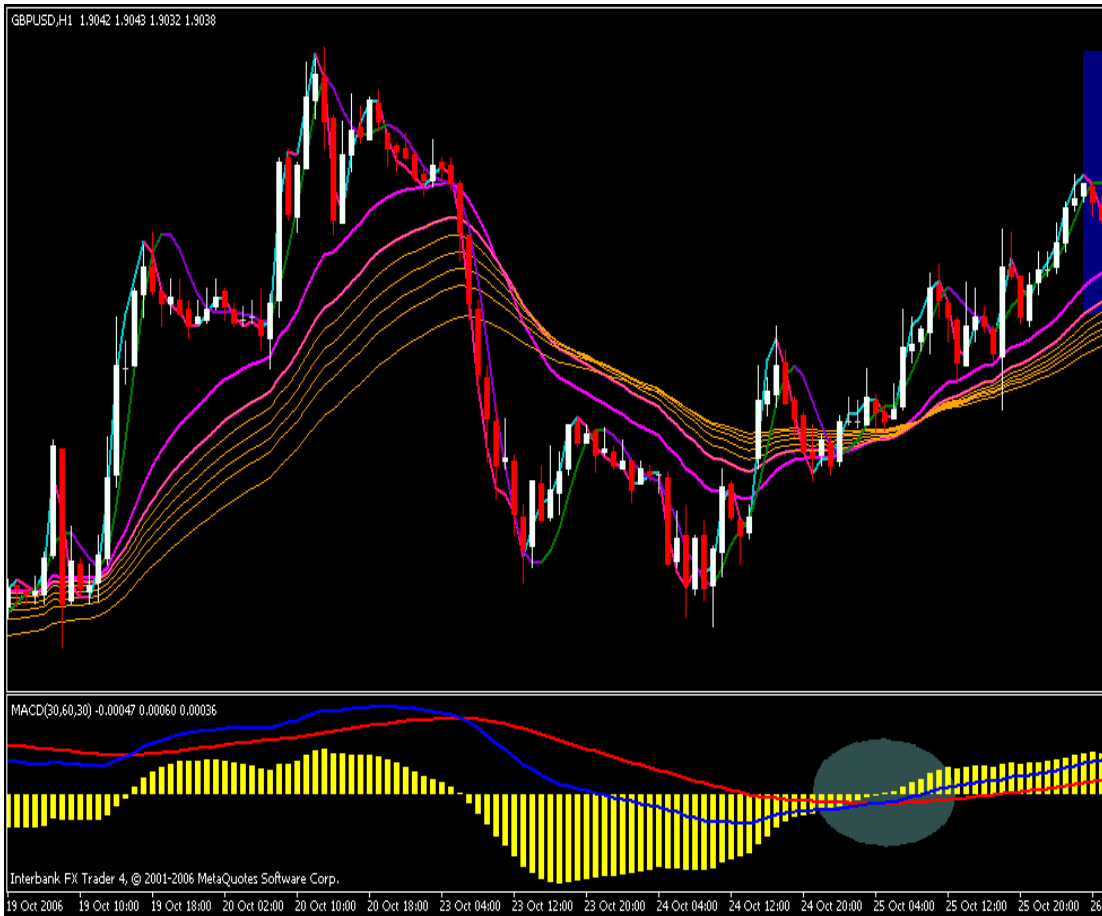


6. More examples

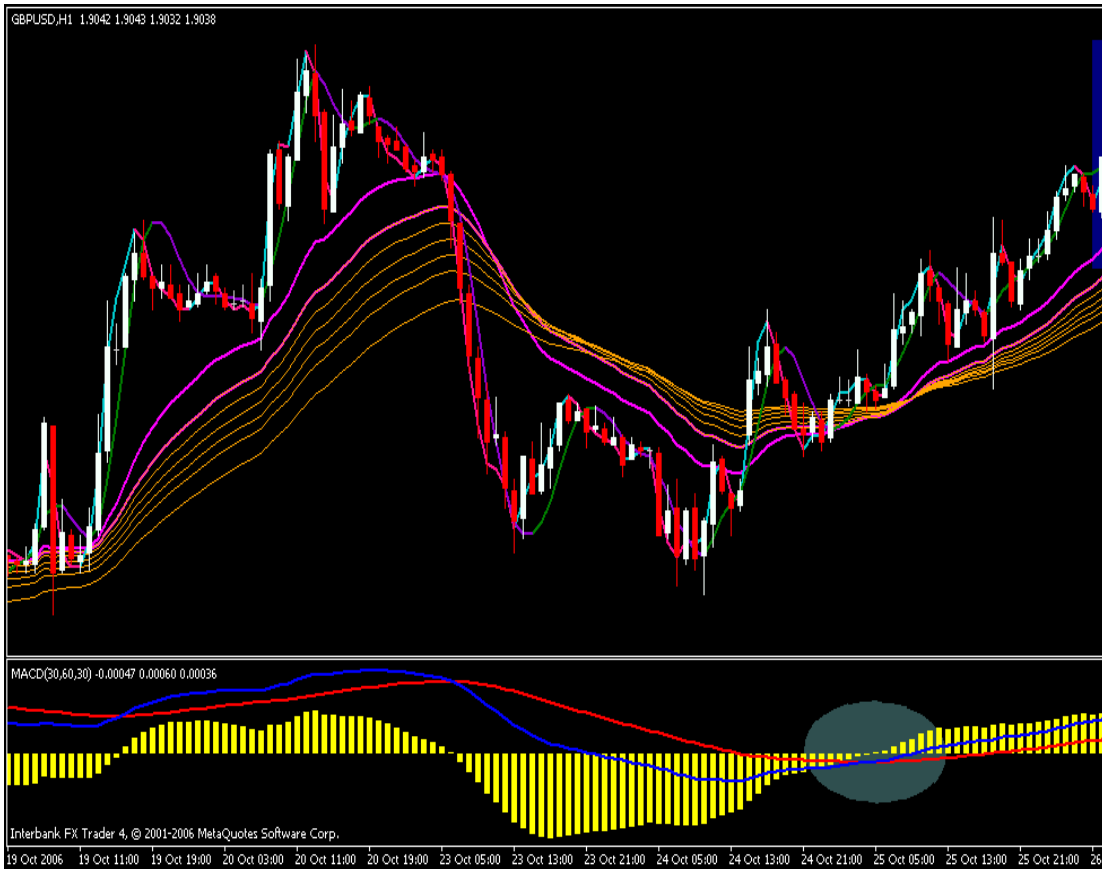
6.1. L1 Signal Examples



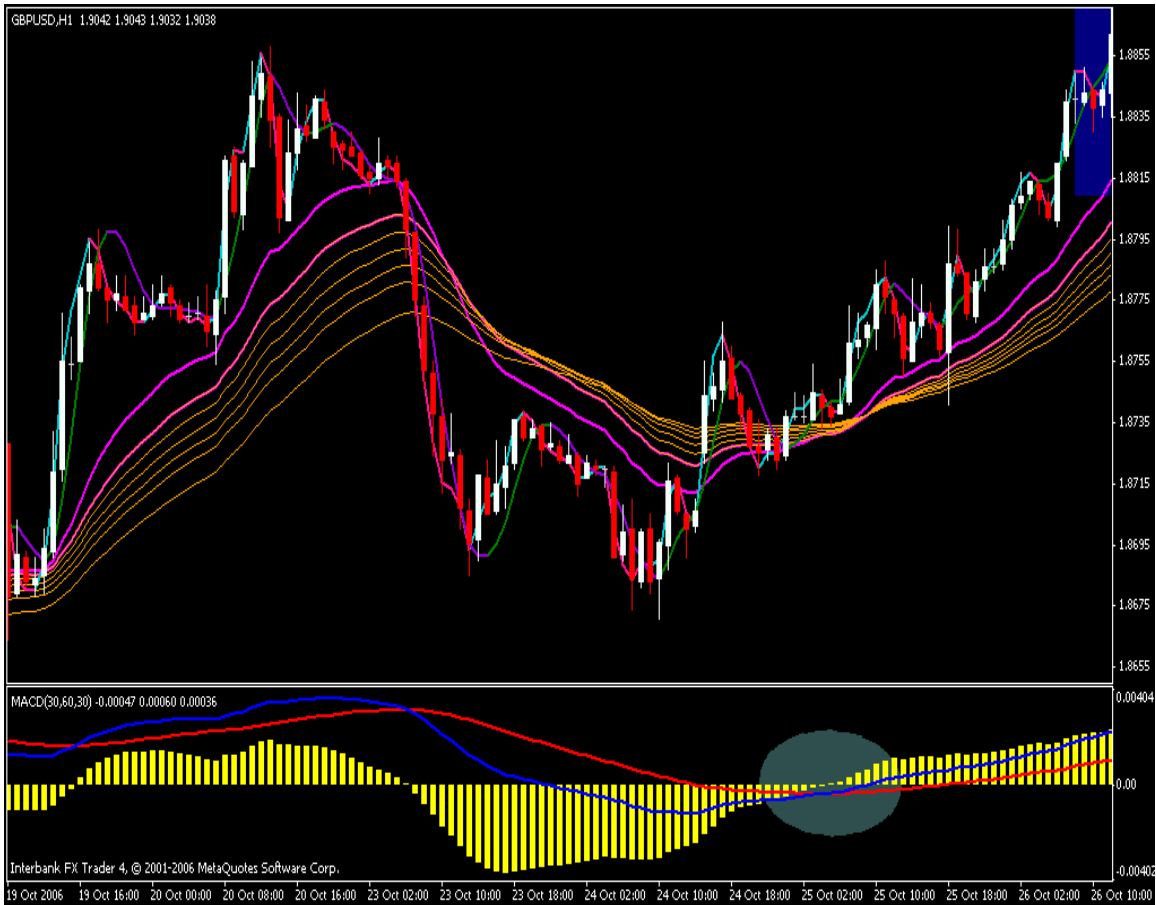
The first thing we need to identify is the current trend. Long MACD crossed up, signifying an uptrend.



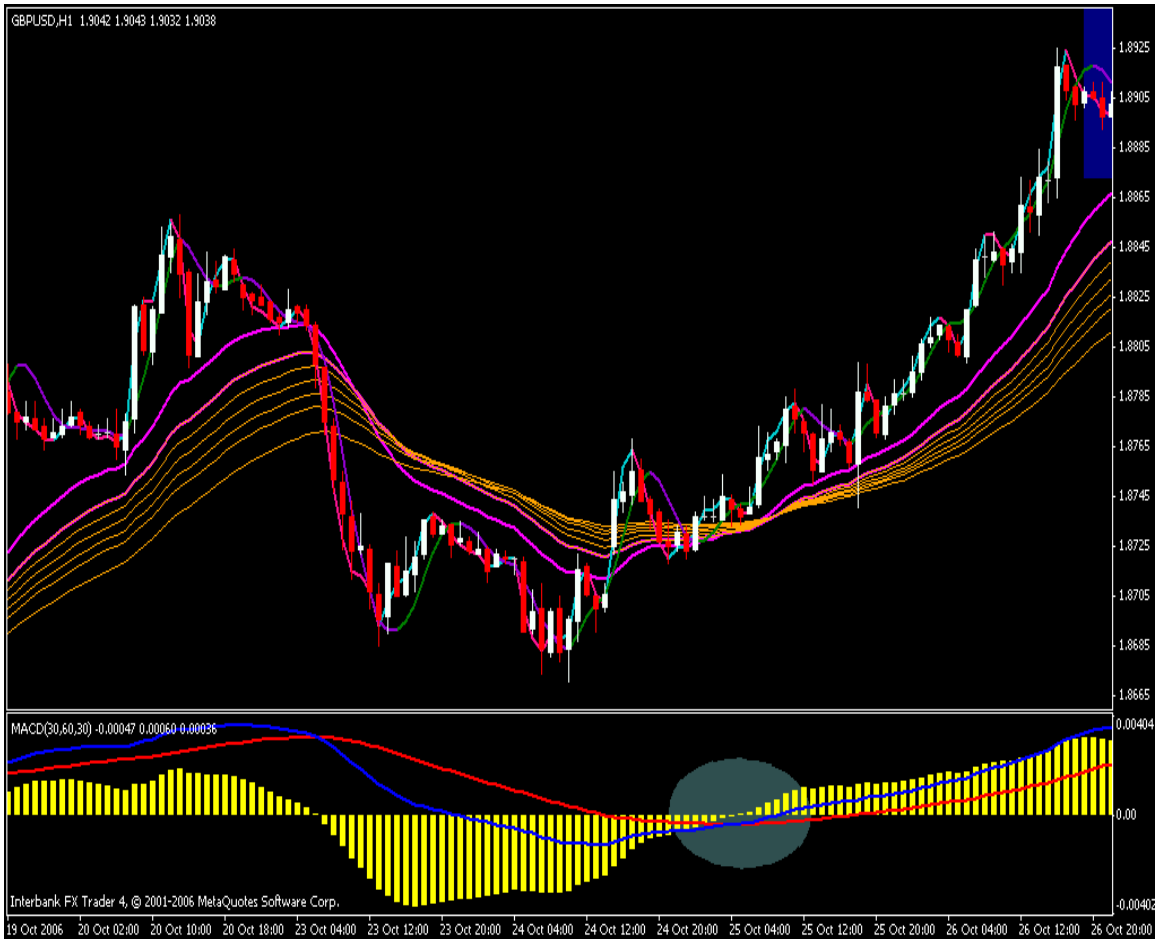
Then we look for a small retracement of price. In the above picture, price retraced a little bit (two red candles), making HMA5 turn down.



The next bar, price resumed its upward direction, making HMA5 turn up again. We had a L1 long signal and entered with three lots.

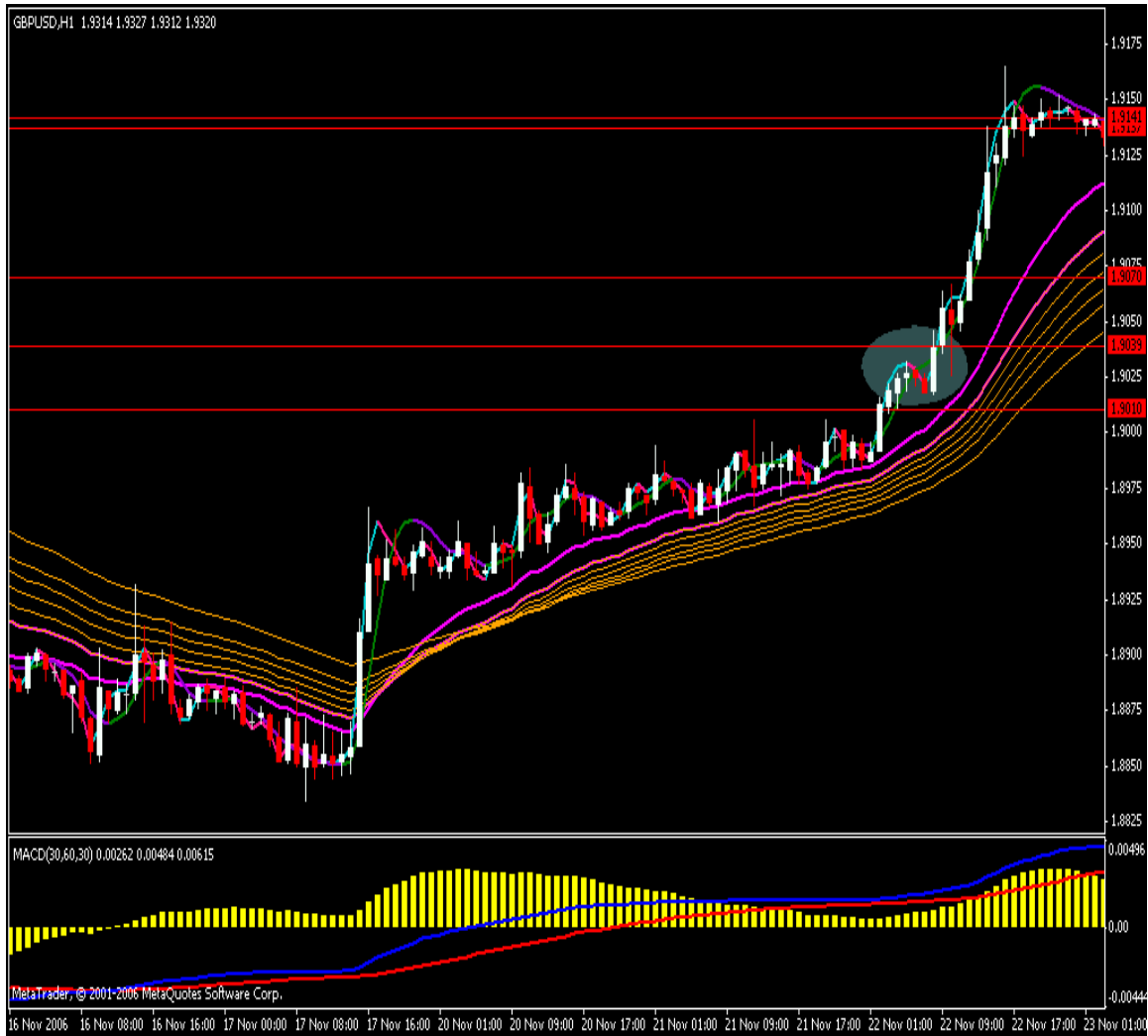


First lot was taken out when price moved the same distance as stop loss. Second lot was exited when HMA5 turned down (indicated by the blue rectangle).



Final lot was taken out as HMA12 turned down.

6.2. L1 & L2 Signal Examples



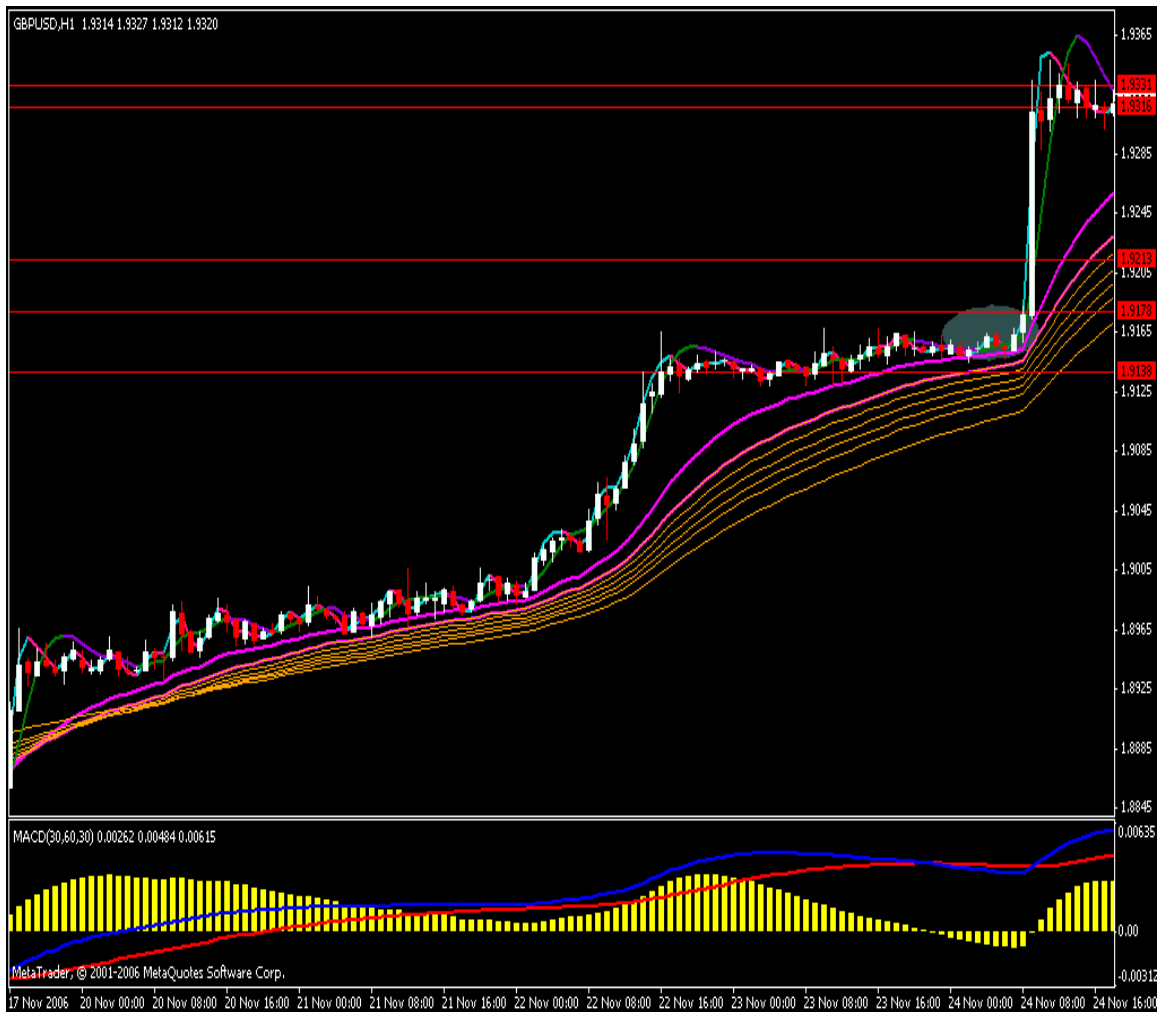
L1 Signal:

We entered at 1.9039, placed stop loss at 1.9010

First lot taken out at 1.9069

Second lot taken out at 1.9137

Third lot taken out at 1.9141



L2 Signal:

We entered at 1.9178, placed stop loss at 1.9138
First lot taken out at 1.9218
Second lot taken out at 1.9331
Third lot taken out at 1.9316

www.Forex-Cobra.com