

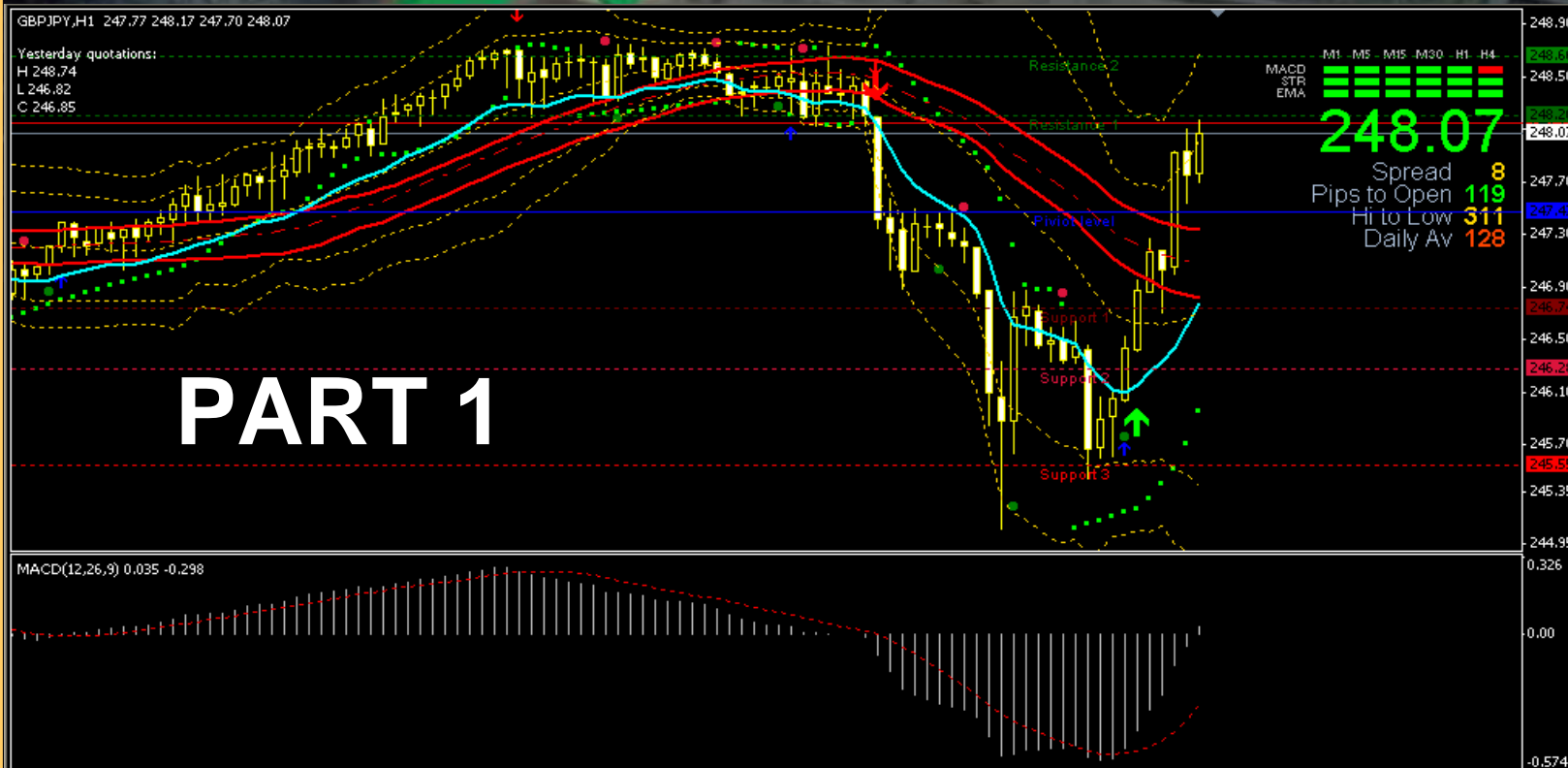
ELEPHANT HUNTER METHOD (EHM)

by:
Ir. Gatot AP, MT

"You must be patient and wait for the market come to you. If you chase it, you'll get run over every time."

Summary (47.47)

Currency	P/L Sell	S Amt (K)	Av Sell	Sell	Buy	Av Buy	B Amt (K)	P/L Buy	Amt (K)	Gross P/L	Net P/L
EUR/USD	33.03.55	USD/JPY	33.01.00	0.0000	1.2790	0.0000	0	0.00	300	120.00	83.60
Low: 1.2774 High: 1.2854	Low: 116.00 High: 116.67	1.0000	0.00	1.16.43	100	-85.96	100	-85.96	-85.96	-85.96	
1.27 82 1.27 85	110 42 110 46	0.0000	1.2251	0.0000	0	0.00	100	-111.15	-111.15	-111.15	
Sell Buy	Sell Buy	1.5791	0.0000	1.5070	100	-234.05	100	-234.05	-234.05	-234.05	
		0.7629	0.0000	0.7629	100	100.00	100	100.00	174.20	174.20	
		2.4007	0.0000	0.7629	100	312.03	100	312.03	208.43	208.43	
GBP/USD	33.01.36	USD/CHF	33.01.25	0	0	0	0	0	0	0	0
Low: 1.0063 High: 1.0081	Low: 1.2209 High: 1.2274	1.00	1.09	22	1.22	64	1.22	69			
Sell Buy	Sell Buy										
EUR/JPY	33.00.06	AUD/USD	33.01.02								
Low: 149.75 High: 149.95	Low: 0.7617 High: 0.7674	149	84	149	88	0.76	26	30			
Sell Buy	Sell Buy										



DISCLAIMER :

*As trading in the Forex market is very risky, the reader if going beyond this point and applying the concepts and methods describing in this document do so on his or her own will and **risk**. The writer and or anyone involved in the compiling of this document will not be held responsible for any losses incurred by using the methods described in this document as no money management nor stoploss levels are discussed as it vary from trader to trader according to there own risk and capital profiles.*

INTRODUCTION



DEAR INDONESIAN TRADERS,

Anda penasaran dengan pair yang memiliki currency terkuat di dunia dan currency terlemah di dunia ? That's **GBP/JPY** atau si GaJah, pair dengan *daily acceleration* terbesar sepanjang sejarah forex. Pair yg sering bikin bangkrut 90% trader dalam sekejap tapi juga berpotensi besar bagi 10% brilliant traders.

INDICATORS



Fakta, bahwa Chart Trading Forex anda telah menyediakan tools lengkap untuk memenangkan trading. Dalam metoda ini menggunakan 4 indikator paling ngetop :

- 1. *Moving Average***: EMA 12 untuk melihat pergerakan price secara detail dekat ke price, dan SMA untuk 32 sebagai trend price akan bergerak ke atas atau ke bawah.
- 2. *Bollinger Bands*** period 20 SD 3 dan SD 2 : untuk pembatasan ruang gerak price, fakta menunjukkan bahwa semua pair forex bergerak pada range BB 20, dan price akan reversal bila candle hourly terletak dalam area antara BB 20 SD 3 dan BB 20 SD 2.
- 3. *MACD (12, 26, 9)*** : indikator yang ampuh dalam memberi *judgement* tambahan, kapan entry dan exit trading, plus kapan harus floating posisi trading. Pasang di MACD Level, angka : +0,90; +0,75; +0,60; +0,45; +0,30; +0,15; +0,075; 0,00; -0,075; -0,15; -0,30; -0,45; -0,60; -0,75; 0,90.

ELEPHANT HUNTER METHOD (EHM) FOR TF H1 ONLY !!!

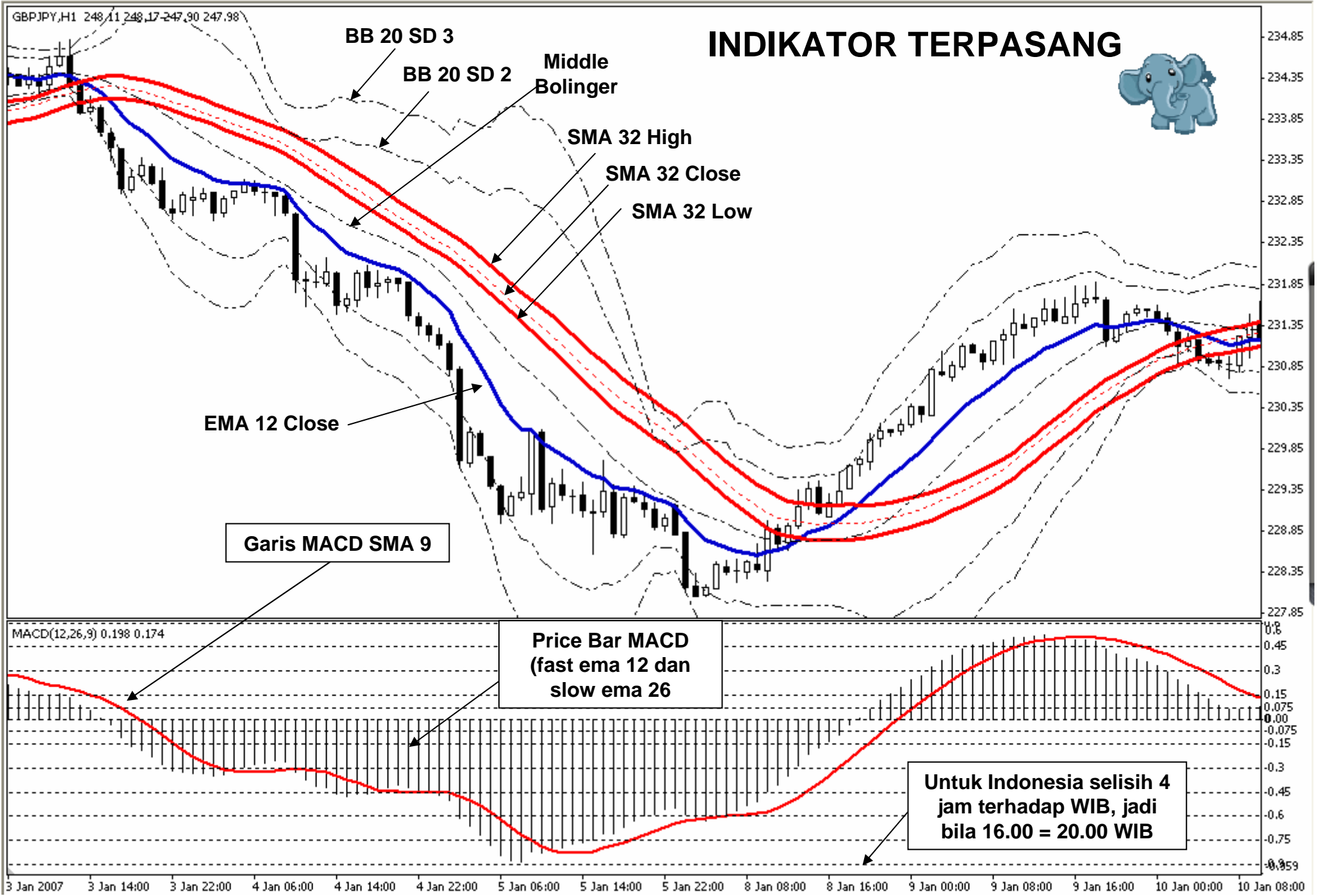


Pada tips strategi kali ini, saya sampaikan strategi untuk **berburu gajah**. Indikator yang digunakan adalah :

1. Exponential Moving Average – **EMA 12** – **AQUA**
2. Simple Moving Average - **SMA 32 Type HIGH** – **RED BOLD**
3. Simple Moving Average – **SMA 32 Type CLOSE** – **RED DOT**
4. Simple Moving Average – **SMA 32 Type LOW** – **RED BOLD**
5. Bollinger Bands Periods 20 Deviation 3 atau **BB 20 SD 3** – **WHITE DOTS**
6. Bollinger Bands Periods 20 Deviation 2 atau **BB 20 SD 2** – **WHITE DOTS**
7. Moving Average Convergence Divergence (**MACD**) standard : **Fast EMA 12, Slow EMA 26** dan **MACD SMA 9**; Apply to **CLOSE**.

SILAHKAN PASANG INDIKATORS DI ATAS PADA CHART
MT4 ANDA DI **TIME FRAME H1**, PILIHAN WARNA
TERSERAH AJA...SELERA MASING2 😊. HASILNYA SEPERTI
SLIDE BERIKUT :

INDIKATOR TERPASANG



RULE FOR A LONG TRADE (TF H1)



1. Perhatikan ema 12: apabila ema 12 memotong/cross ke atas middle bollinger bands, maka **siap-siap** open **BUY**. Check MACD, apakah price bar bergerak ke atas dan di atas garis merah.
2. Jika ema 12 setelah cross ke atas middle bollinger bands, kemudian cross ke atas SMA 32 Low, maka **OPEN BUY**
3. **CLOSE**: Ikuti trend, jika ema 12 cross **DOWN** SMA 32 High maka **CLOSE BUY**.

Peraturan yg simple, jika anda jeli, maka ada beberapa kesempatan untuk entry trade long (BUY) :

1. Saat Ema 12 cross ke atas middle BB maka bisa langsung → first BUY
2. Saat Ema 12 cross middle BB, SMA 32 Low → second BUY.
3. Saat Ema 12 cross middle BB, SMA 32 Low, SMA 32 Close → third BUY.
4. Saat Ema 12 cross middle BB, SMA 32 Low, SMA 32 Close, SMA 32 High → forth BUY.

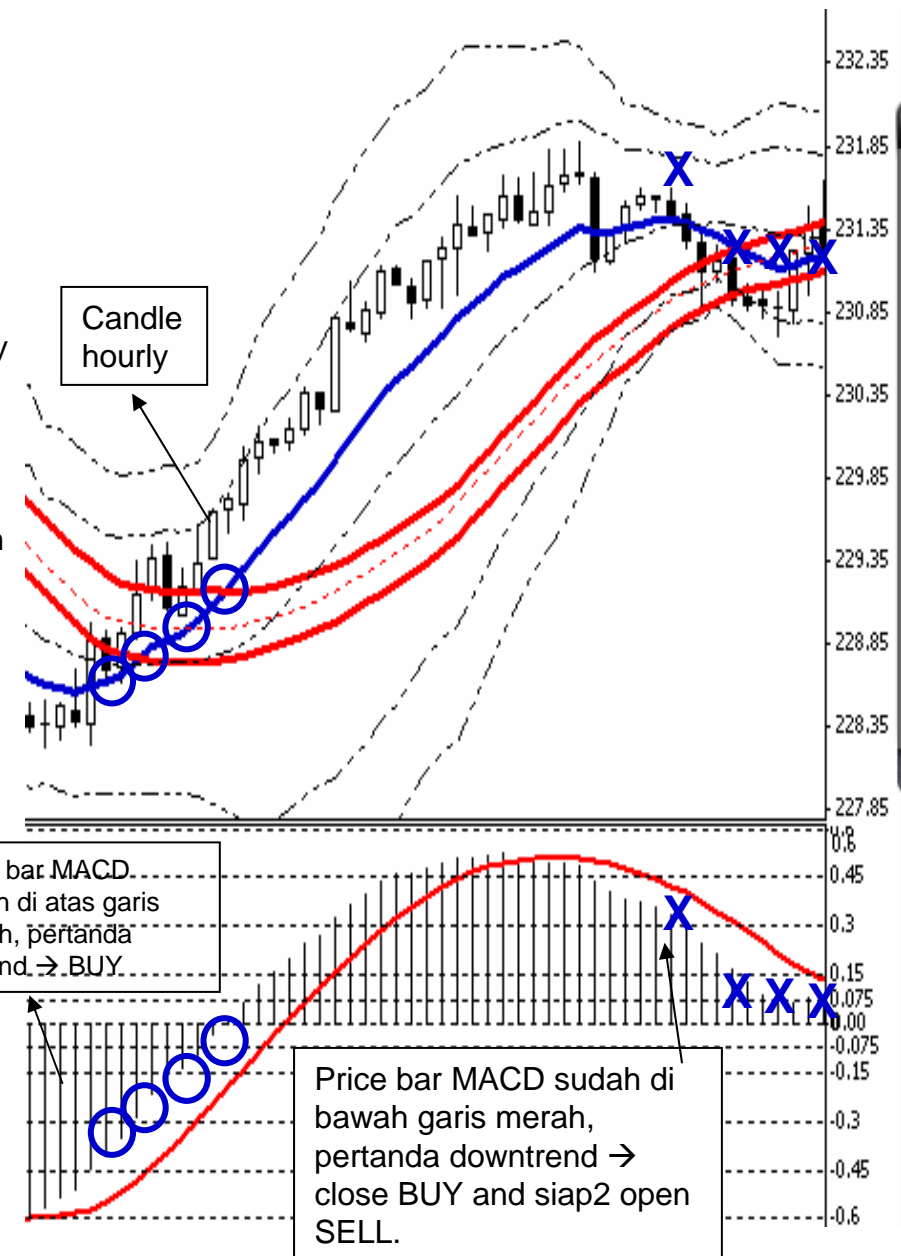
Untuk **close buy**-pun dapat berjenjang :

1. Saat Ema 12 cross down middle BB → Close
2. Saat Ema 12 cross down middle BB, SMA 32 High → Close
3. Saat Ema 12 cross down middle BB, SMA 32 High, SMA Close → Close
4. Saat Ema 12 cross down middle BB, SMA 32 High, SMA Close dan SMA 32 Low → Close

Setelah open buy, pasang SL dan TP :

1. Pasang 1 SL : 2 TP → misal SL 30 maka TP 60
2. SL dipasang 10 pips di bawah candle low ke-4 sebelum open buy.
3. Terapkan strategi Forex Runner, jika price naik 15 pips, maka SL dan TP naikkan 15 pips juga.

→ **Bila trend kuat (ema 12 sejajar SMA 32), TP 100**



RULE FOR A SHORT TRADE (TF H1)



1. Perhatikan ema 12: apabila ema 12 cross down middle bollinger bands, maka **siap-siap** open **SELL**. Check MACD, apakah price bar bergerak di bawah garis merah.
2. Jika ema 12 setelah cross down middle bollinger bands, diikuti cross down SMA 32 High, maka **OPEN SELL**
3. **CLOSE**: Ikuti trend, jika ema 12 cross **UP** SMA 32 Low maka **CLOSE SELL**.

Jika anda jeli, maka ada beberapa kesempatan untuk entry trade short (SELL) :

1. Saat Ema 12 cross down middle BB maka bisa langsung → first SELL
2. Saat Ema 12 cross down middle BB, SMA 32 High → second SELL.
3. Saat Ema 12 cross down middle BB, SMA 32 High, SMA 32 Close → third SEL.
4. Saat Ema 12 cross down middle BB, SMA 32 High, SMA 32 Close, SMA 32 Low → forth SELL.

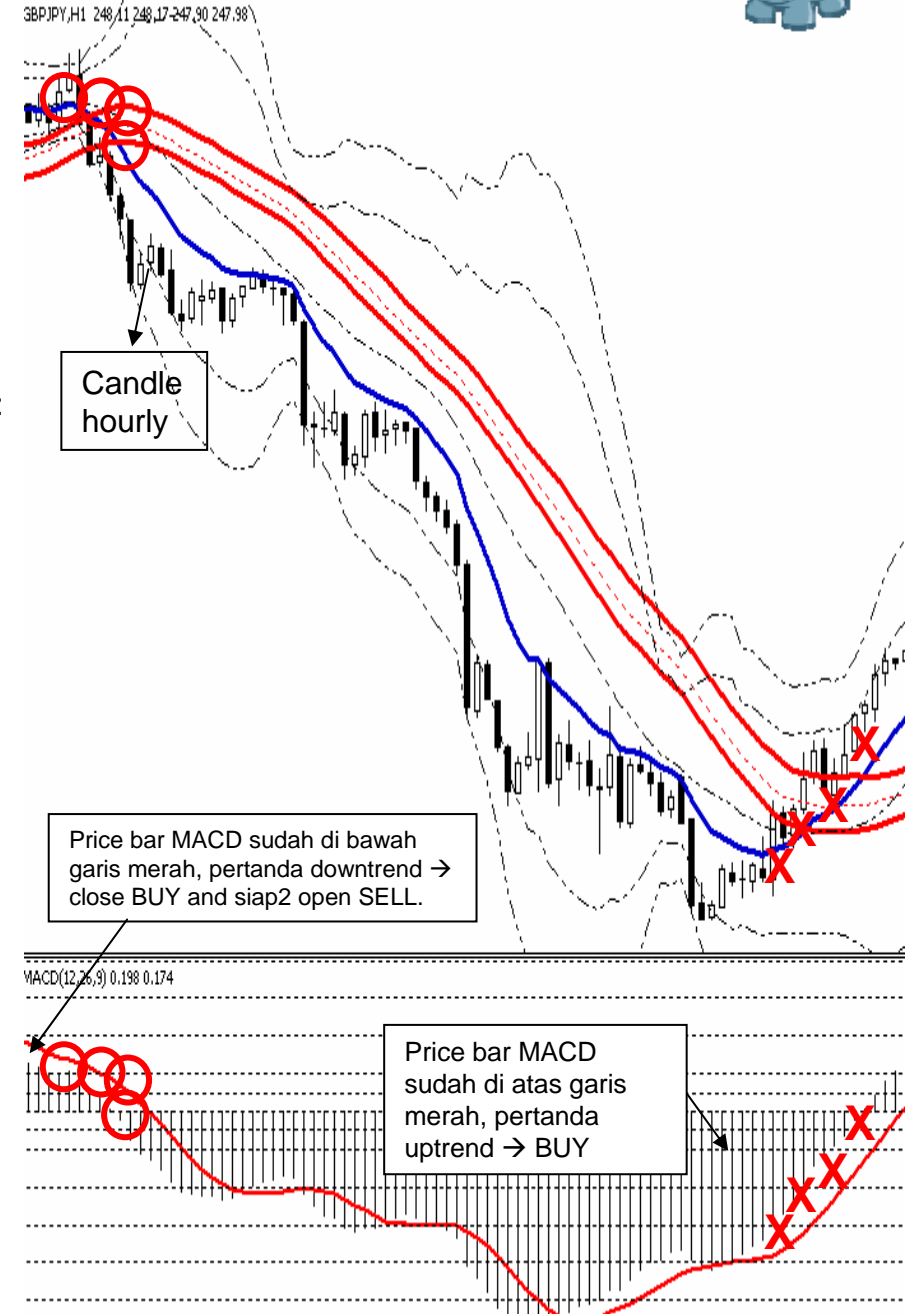
Untuk **close buy**-pun dapat berjenjang :

1. Saat Ema 12 cross up middle BB → Close
2. Saat Ema 12 cross up middle BB, SMA 32 Low → Close
3. Saat Ema 12 cross up middle BB, SMA 32 Low, SMA Close → Close
4. Saat Ema 12 cross up middle BB, SMA 32 Low, SMA Close dan SMA 32 High → Close

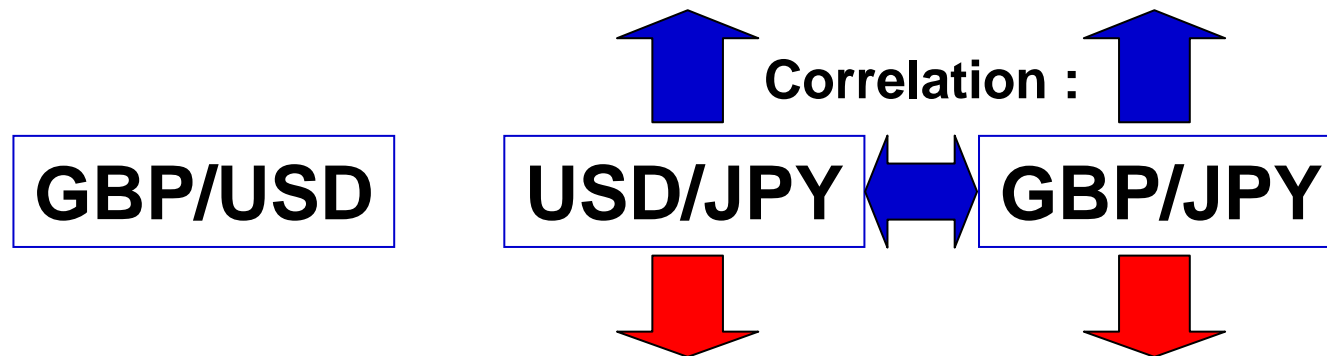
Setelah open buy, pasang SL dan TP :

1. Pasang 1 SL : 2 TP → misal SL 30 maka TP 60
2. SL dipasang 10 pips di atas candle high ke-4 sebelum open sell.
3. Terapkan strategi Forex Runner, jika price turun 15 pips, maka SL dan TP turunkan 15 pips juga.

→ Bila trend kuat (ema 12 sejajar SMA 32) TP 100



JANGAN LUPA !, TRADING DI GBP/JPY 80% NEWS DAN 20% TEKNIKAL, ARTINYA GAJAH SANGAT RENTAN AKIBAT NEWS, PANTAU TERUS NEWS GBP DAN JPY, PERHATIKAN ACTION BoE DAN BoJ; SETELAH ITU LIHAT CHART H1 ANDA, CHART TIDAK AKAN MENIPU ANDA, SEMUA HASIL NEWS TERTUANG PADA CHART. SATU LAGI, PERHATIKAN USD/JPY, GBP/JPY SEARAH DENGAN PAIR INI, JUST IT !!!

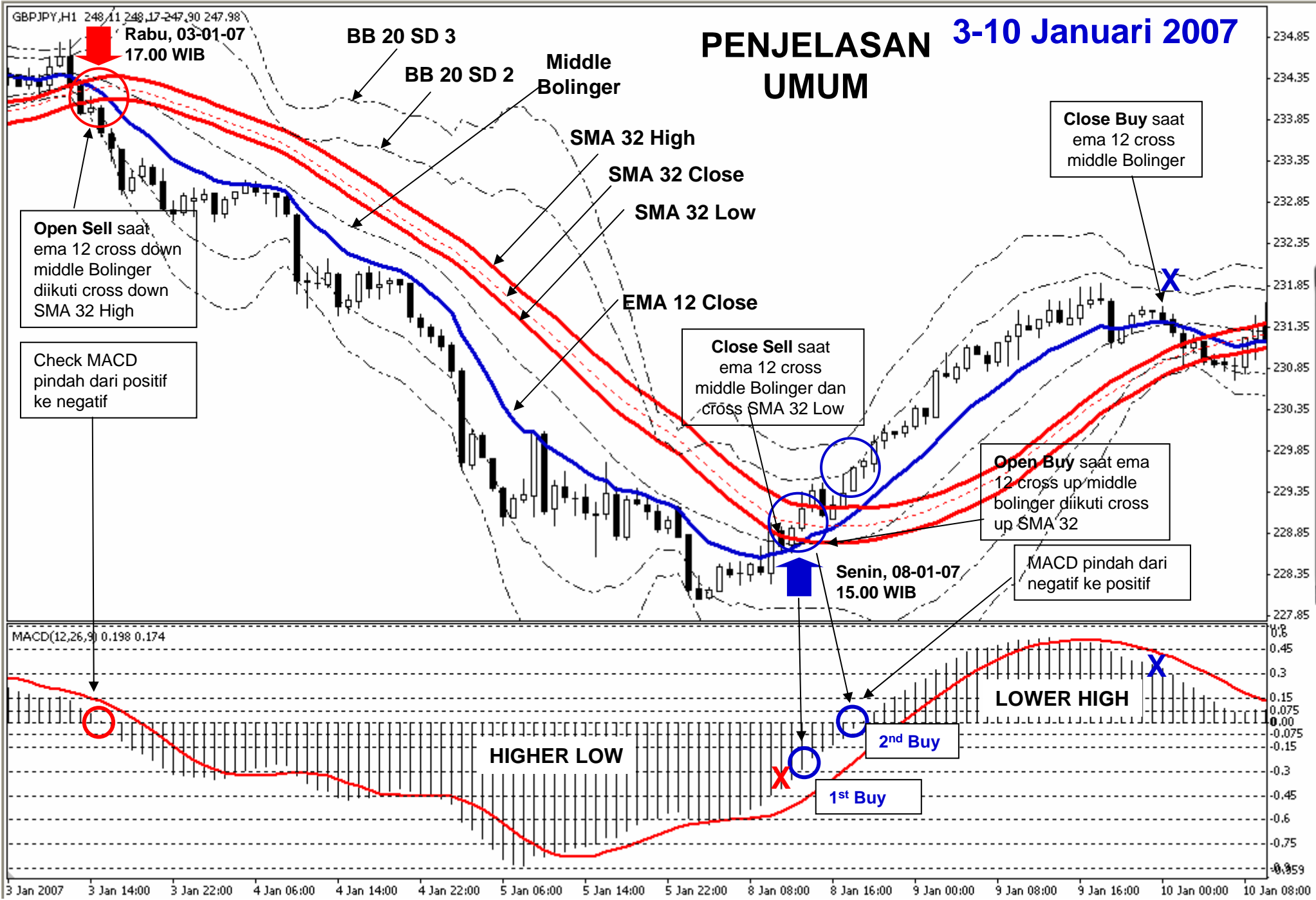


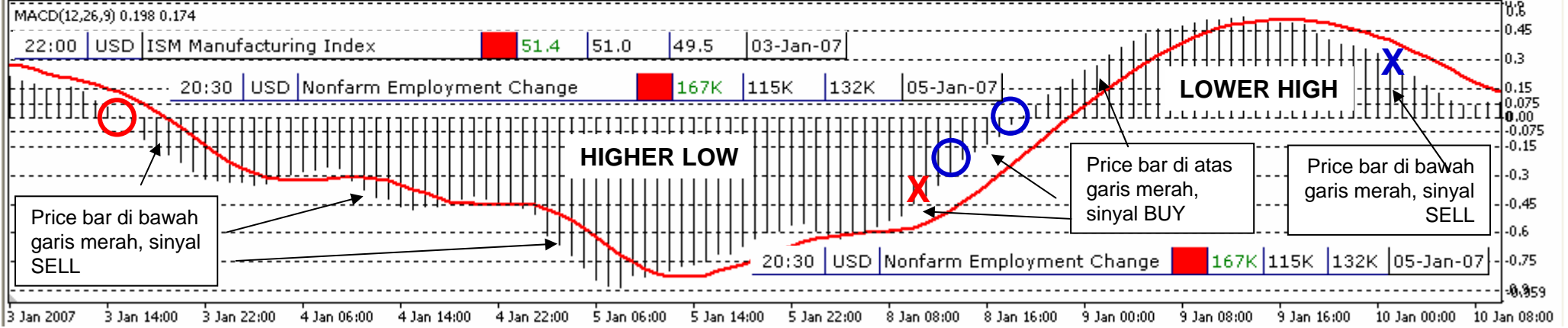
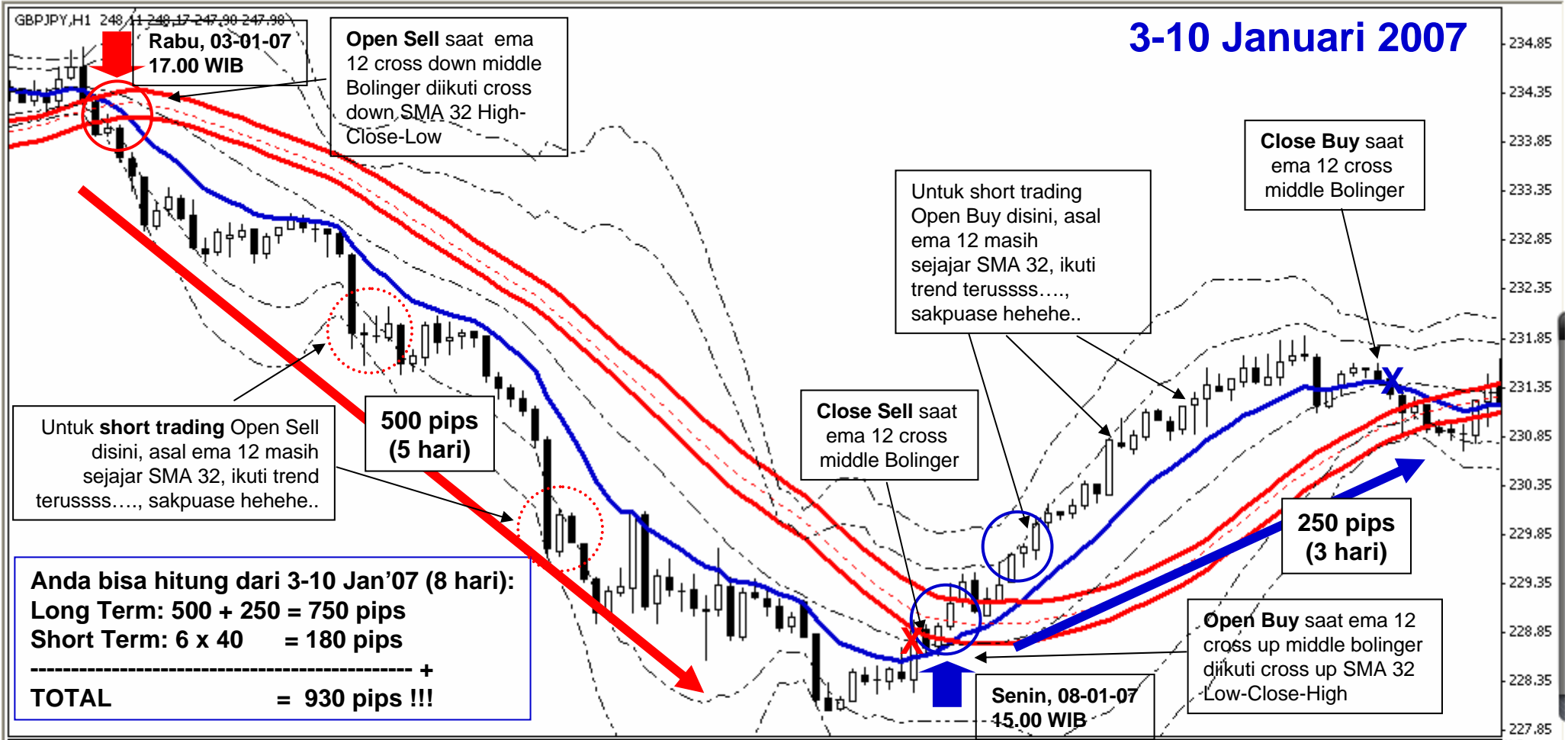
YUPS, SEMUA LANGKAH SUDAH DIJELASKAN, SILAHKAN DIPELAJARI HISTORY TRADING MENGGUNAKAN METODA INI, TIDAK TANGGUNG-TANGGUNG SELAMA 6 (ENAM) BULAN DARI JANUARI-JUNI 2007, SILAHKAN MABOK PELAJARI EBOOKS INI...qqqqqq....

SAMPAI JUMPA DI EBOOK2 BERIKUTNYA YG AKAN MEMBAHAS GBP/USD, EUR/GBP, USD/CHF DAN TAK LUPA PAIR BLACK HORSE: AUD/USD.

SALAM SUKSES
GATOT AP (gatot_apfx@yahoo.co.uk)

PENJELASAN UMUM 3-10 Januari 2007





10-17 Januari 2007

Anda masih bisa open di area ini, asal EMA 12 masih sejajar pita SMA 32 dan EMA 12 belum cross middle bolinger

Pedoman untuk short term, jika candle berada di antara BB 20 SD 3 dan BB 20 SD 2, maka price akan reversal

Open Buy saat ema 12 cross up middle bolinger diikuti cross up SMA 32 High

Selasa, 16-01-07
09.00 WIB

Close Buy saat ema 12 cross middle Bolinger

Karena ema 12 belum cross dg garis middle bolinger, bahkan jika hanya nyentuh/singgungan jgn buru2 close, krn price masih bergerak naik terus searah trend

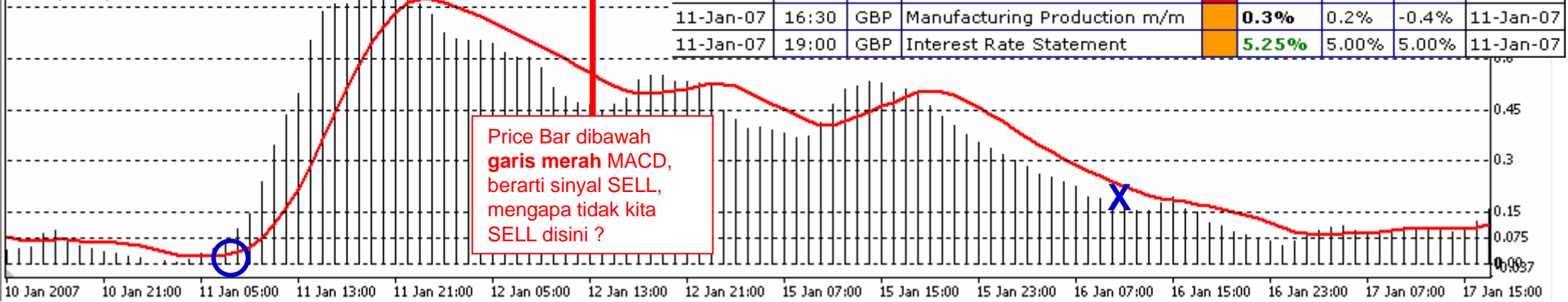
530 pips
(6 hari)

Kamis, 11-01-07
09.00 WIB

11-Jan-07	12:00	JPY	Leading Index m/m	20.0%	20.0%	54.5%	11-Jan-07
11-Jan-07	13:00	JPY	Machine Tool Orders y/y	-2.4%		4.9%	11-Jan-07
11-Jan-07	16:30	GBP	Industrial Production m/m	0.5%	0.2%	-0.8%	11-Jan-07
11-Jan-07	16:30	GBP	Manufacturing Production m/m	0.3%	0.2%	-0.4%	11-Jan-07
11-Jan-07	19:00	GBP	Interest Rate Statement	5.25%	5.00%	5.00%	11-Jan-07

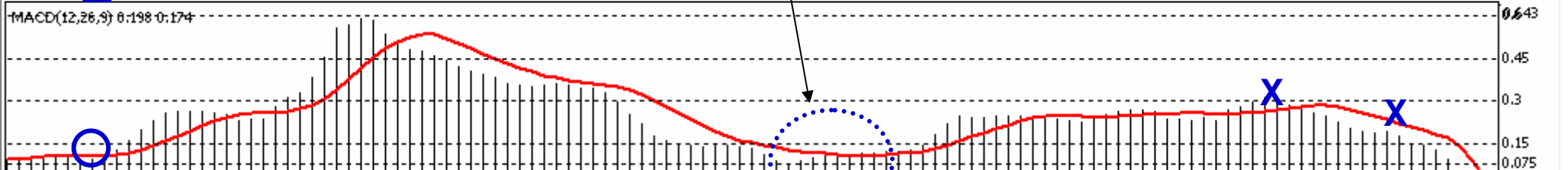
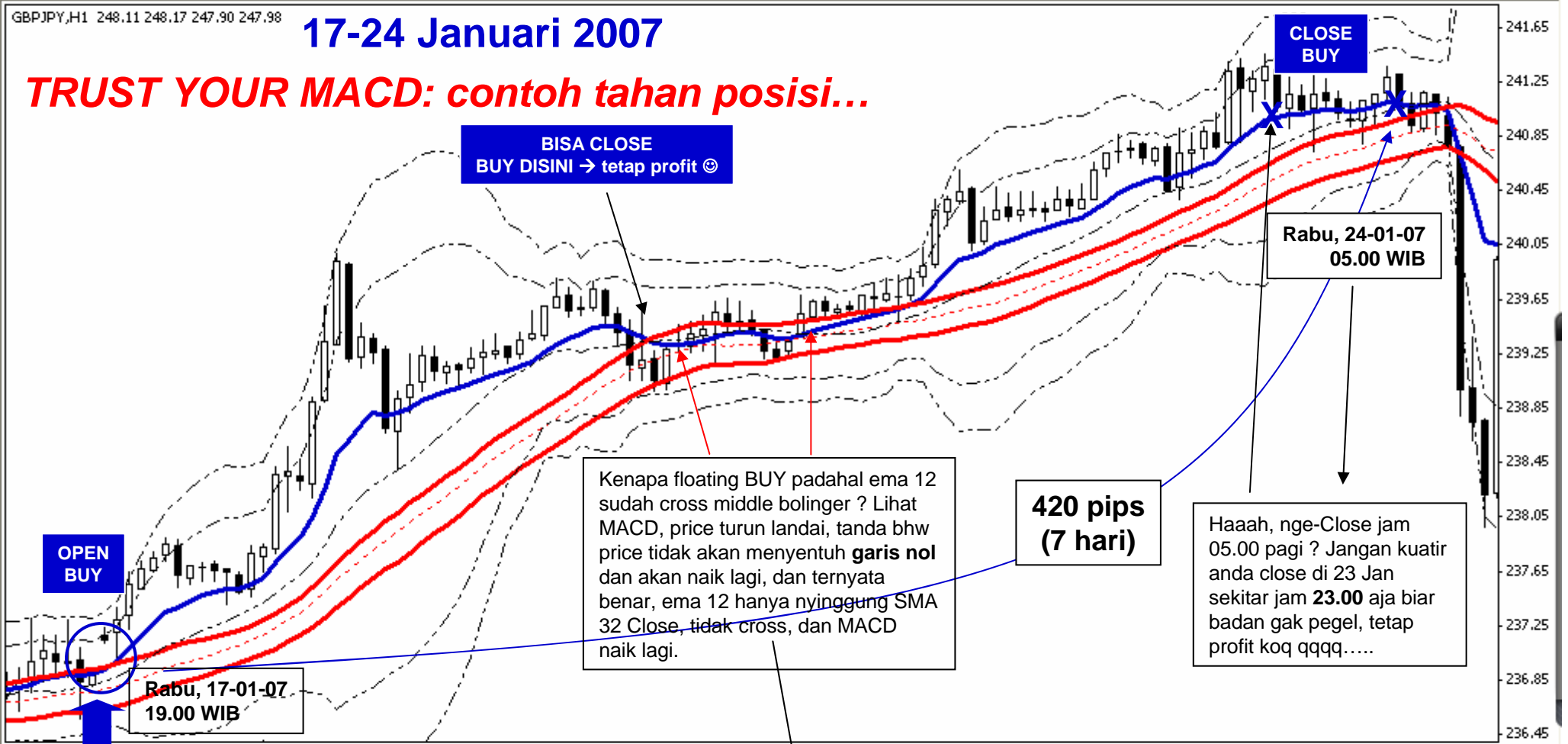
MACD(12,26,9) 0.198 0.174

Price Bar dibawah garis merah MACD, berarti sinyal SELL, mengapa tidak kita SELL disini ?



17-24 Januari 2007

TRUST YOUR MACD: contoh tahan posisi...

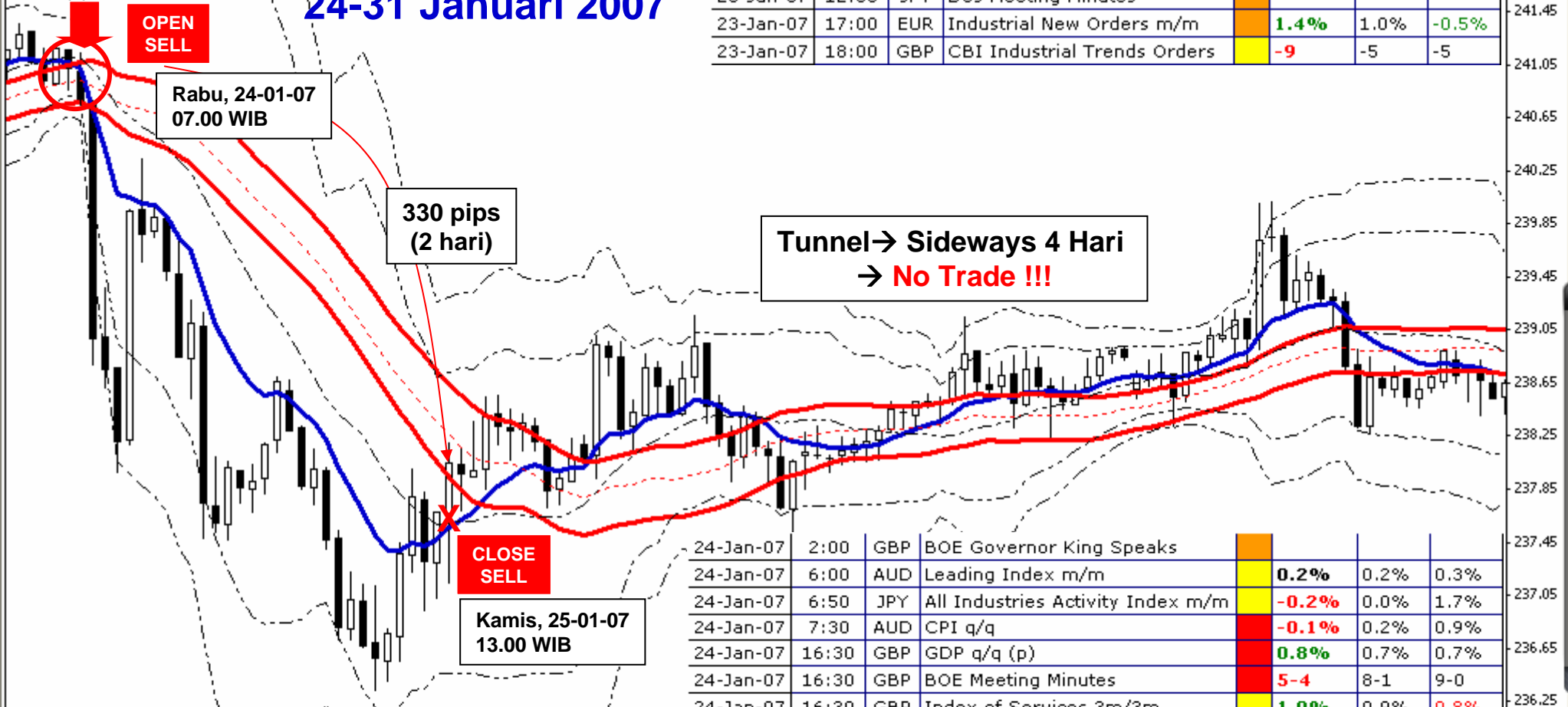


17-Jan-00	6:50	JPY	Trade Balance (p)	1.03T	900B			
17-Jan-00	12:00	JPY	Consumer Confidence	45.9	48.0			
17-Jan-00	14:00	EUR	German CPI m/m (r)	0.9%	0.8%			
17-Jan-00	16:30	GBP	Claimant Count Change	-5.5K	-5.0K			
17-Jan-00	16:30	GBP	Average Earnings Index +Bonus q/y	4.1%	4.2%			
17-Jan-00	16:30	GBP	Unemployment Rate	5.5%	5.5%			
23-Jan-07	12:00	JPY	BOJ Meeting Minutes					
23-Jan-07	17:00	EUR	Industrial New Orders m/m	1.4%	1.0%			-0.5%
23-Jan-07	18:00	GBP	CBI Industrial Trends Orders	-9	-5			-5

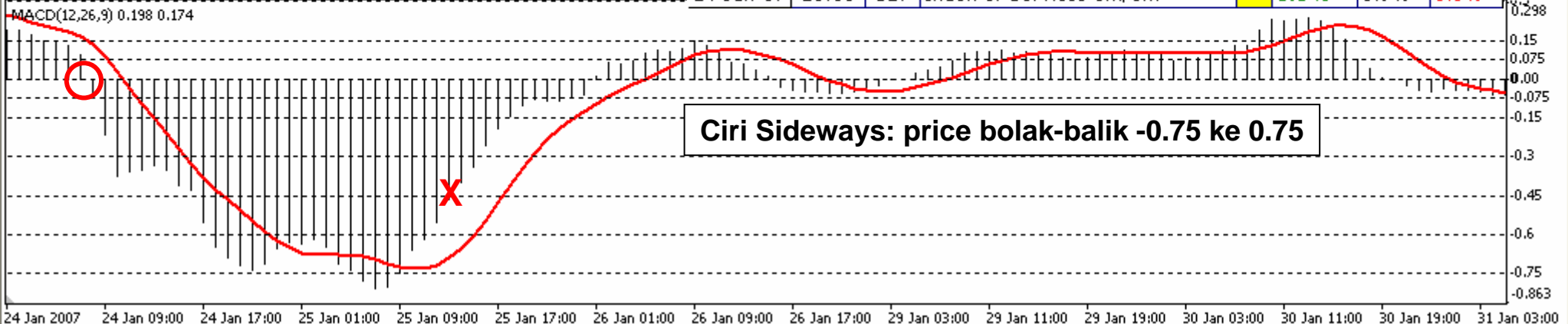
GBPJPY_H1 248.11 248.17 247.90 247.88

24-31 Januari 2007

23-Jan-07	12:00	JPY	BOJ Meeting Minutes			
23-Jan-07	17:00	EUR	Industrial New Orders m/m	1.4%	1.0%	-0.5%
23-Jan-07	18:00	GBP	CBI Industrial Trends Orders	-9	-5	-5



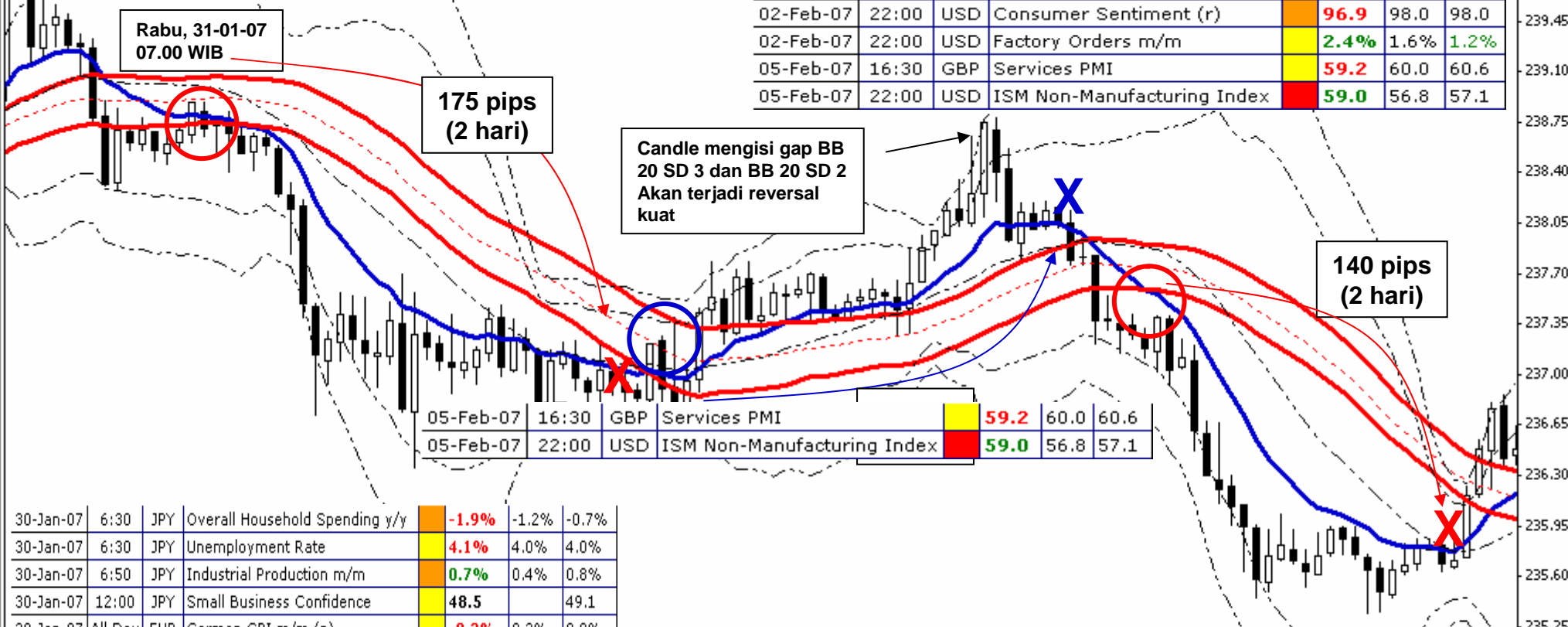
24-Jan-07	2:00	GBP	BOE Governor King Speaks			
24-Jan-07	6:00	AUD	Leading Index m/m	0.2%	0.2%	0.3%
24-Jan-07	6:50	JPY	All Industries Activity Index m/m	-0.2%	0.0%	1.7%
24-Jan-07	7:30	AUD	CPI q/q	-0.1%	0.2%	0.9%
24-Jan-07	16:30	GBP	GDP q/q (p)	0.8%	0.7%	0.7%
24-Jan-07	16:30	GBP	BOE Meeting Minutes	5-4	8-1	9-0
24-Jan-07	16:30	GBP	Index of Services 3m/3m	1.0%	0.9%	0.8%



24 Jan 2007 24 Jan 09:00 24 Jan 17:00 25 Jan 01:00 25 Jan 09:00 25 Jan 17:00 26 Jan 01:00 26 Jan 09:00 26 Jan 17:00 29 Jan 03:00 29 Jan 11:00 29 Jan 19:00 30 Jan 03:00 30 Jan 11:00 30 Jan 19:00 31 Jan 03:00

GBPJPY,H1 248.11 248.17 247.90 247.98

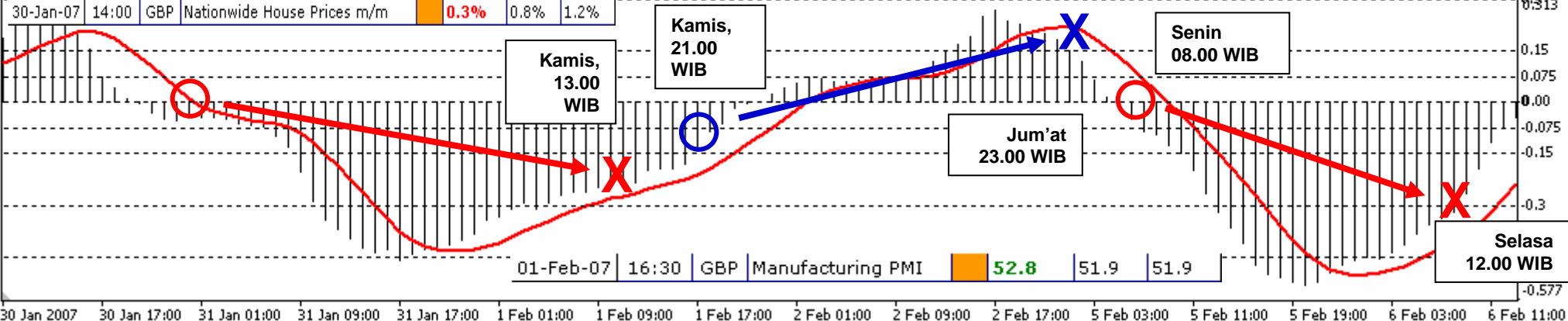
31 Jan-6 Februari 2007



02-Feb-07	20:30	USD	Nonfarm Employment Change	111K	146K	206K
02-Feb-07	20:30	USD	Unemployment Rate	4.6%	4.5%	4.5%
02-Feb-07	20:30	USD	Average Hourly Earnings m/m	0.2%	0.4%	0.4%
02-Feb-07	22:00	USD	Consumer Sentiment (r)	96.9	98.0	98.0
02-Feb-07	22:00	USD	Factory Orders m/m	2.4%	1.6%	1.2%
05-Feb-07	16:30	GBP	Services PMI	59.2	60.0	60.6
05-Feb-07	22:00	USD	ISM Non-Manufacturing Index	59.0	56.8	57.1

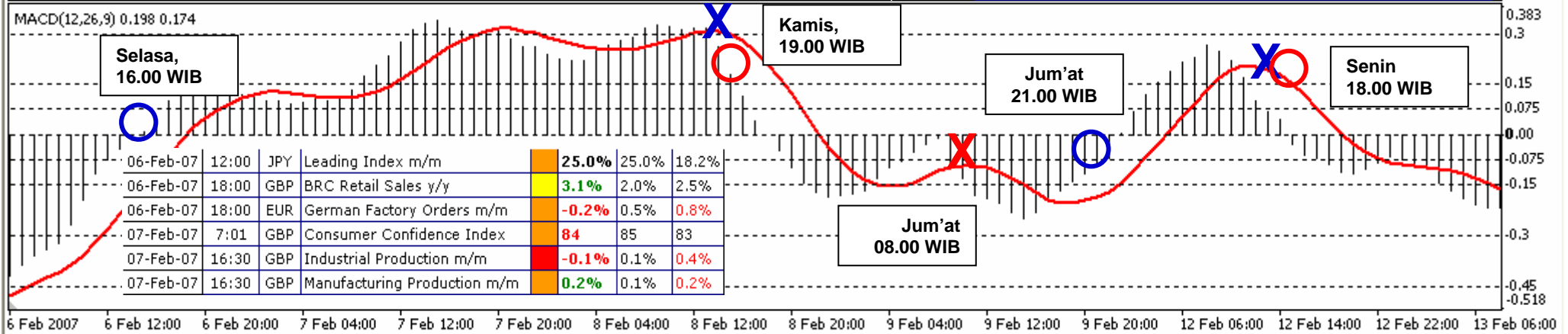
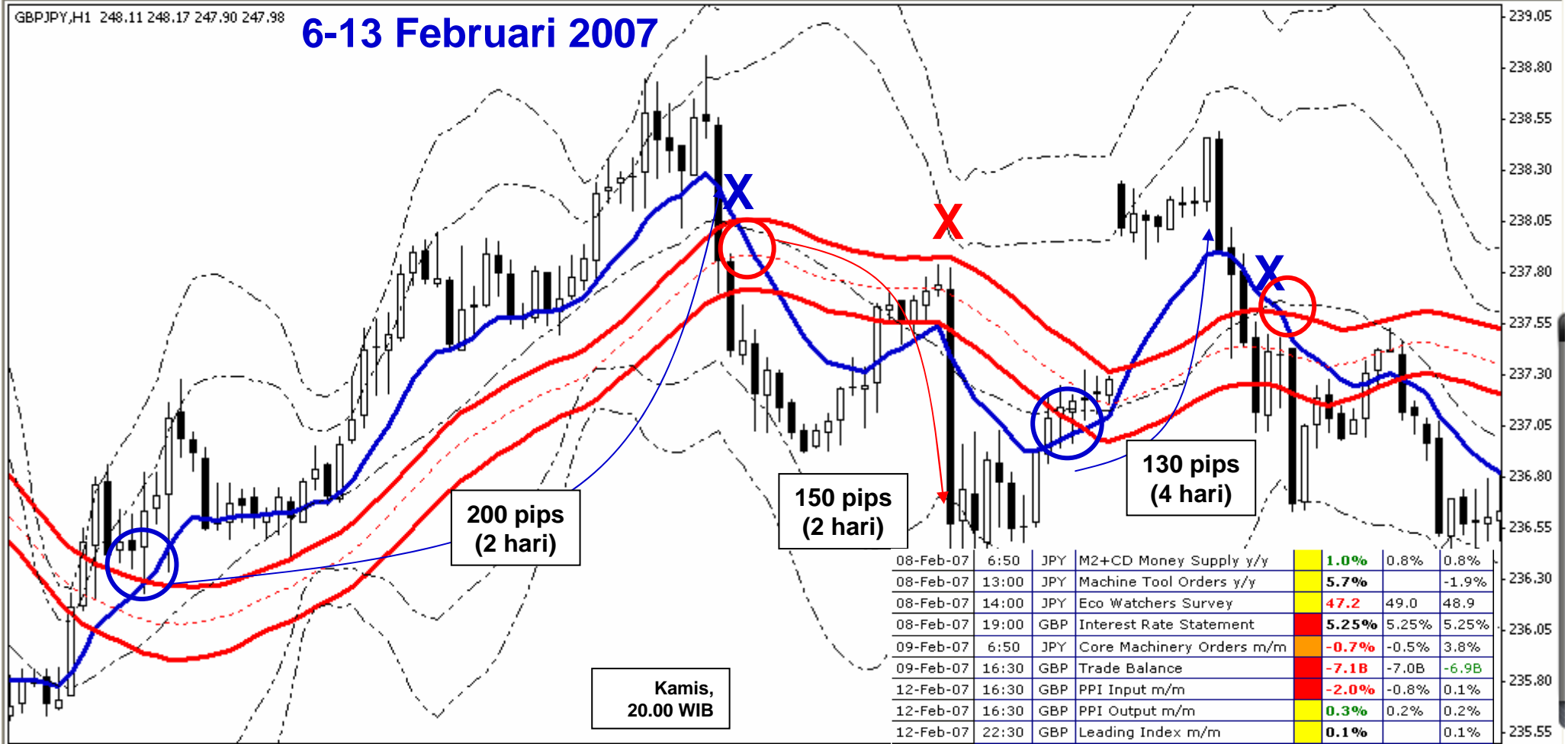
05-Feb-07	16:30	GBP	Services PMI	59.2	60.0	60.6
05-Feb-07	22:00	USD	ISM Non-Manufacturing Index	59.0	56.8	57.1

30-Jan-07	6:30	JPY	Overall Household Spending y/y	-1.9%	-1.2%	-0.7%
30-Jan-07	6:30	JPY	Unemployment Rate	4.1%	4.0%	4.0%
30-Jan-07	6:50	JPY	Industrial Production m/m	0.7%	0.4%	0.8%
30-Jan-07	12:00	JPY	Small Business Confidence	48.5		49.1
30-Jan-07	All Day	EUR	German CPI m/m (p)	-0.2%	0.2%	0.8%
30-Jan-07	14:00	GBP	Nationwide House Prices m/m	0.3%	0.8%	1.2%



01-Feb-07	16:30	GBP	Manufacturing PMI	52.8	51.9	51.9
-----------	-------	-----	-------------------	------	------	------

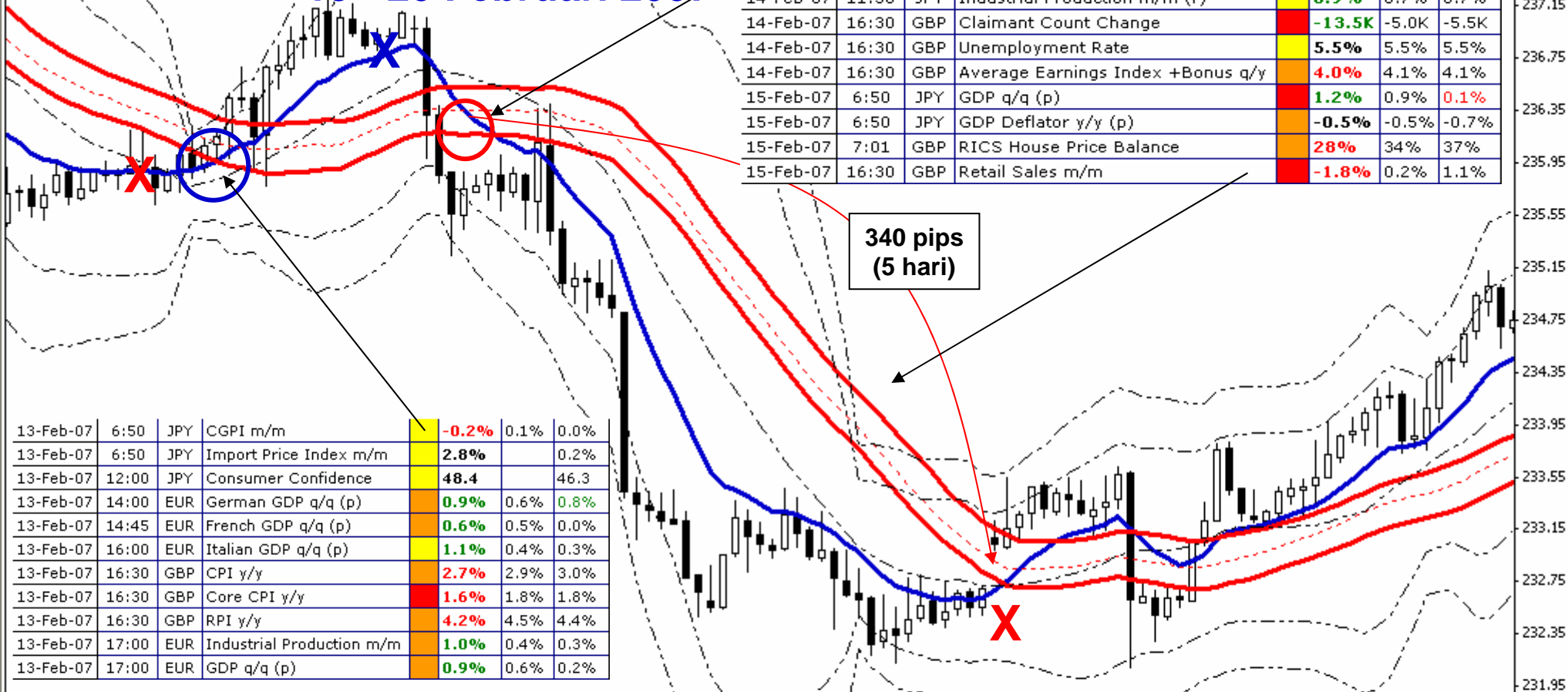
6-13 Februari 2007



GBPJPY,H1 248.11 248.17 247.90 247.98

13 - 20 Februari 2007

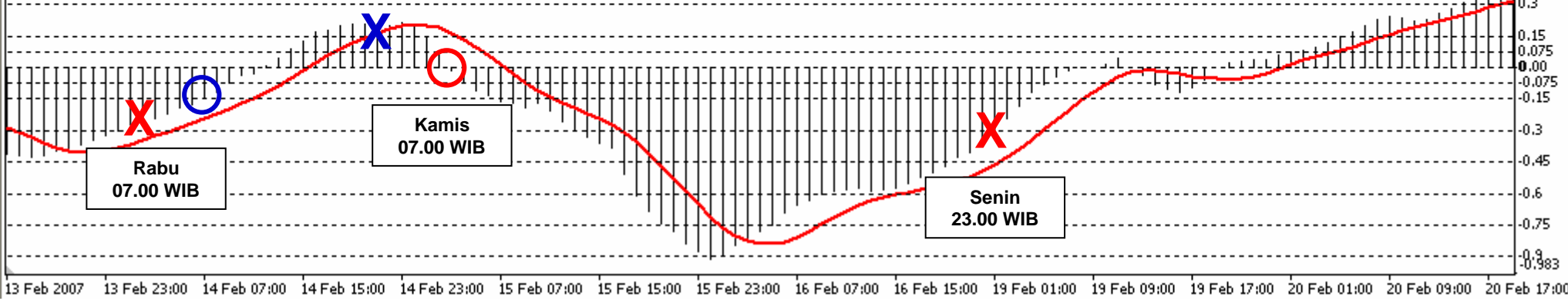
14-Feb-07	6:50	JPY	Trade Balance (r)	1.22T	1.18T	1.03T
14-Feb-07	11:30	JPY	Industrial Production m/m (r)	0.9%	0.7%	0.7%
14-Feb-07	16:30	GBP	Claimant Count Change	-13.5K	-5.0K	-5.5K
14-Feb-07	16:30	GBP	Unemployment Rate	5.5%	5.5%	5.5%
14-Feb-07	16:30	GBP	Average Earnings Index +Bonus q/y	4.0%	4.1%	4.1%
15-Feb-07	6:50	JPY	GDP q/q (p)	1.2%	0.9%	0.1%
15-Feb-07	6:50	JPY	GDP Deflator y/y (p)	-0.5%	-0.5%	-0.7%
15-Feb-07	7:01	GBP	RICS House Price Balance	28%	34%	37%
15-Feb-07	16:30	GBP	Retail Sales m/m	-1.8%	0.2%	1.1%



340 pips
(5 hari)

13-Feb-07	6:50	JPY	CGPI m/m	-0.2%	0.1%	0.0%
13-Feb-07	6:50	JPY	Import Price Index m/m	2.8%		0.2%
13-Feb-07	12:00	JPY	Consumer Confidence	48.4		46.3
13-Feb-07	14:00	EUR	German GDP q/q (p)	0.9%	0.6%	0.8%
13-Feb-07	14:45	EUR	French GDP q/q (p)	0.6%	0.5%	0.0%
13-Feb-07	16:00	EUR	Italian GDP q/q (p)	1.1%	0.4%	0.3%
13-Feb-07	16:30	GBP	CPI y/y	2.7%	2.9%	3.0%
13-Feb-07	16:30	GBP	Core CPI y/y	1.6%	1.8%	1.8%
13-Feb-07	16:30	GBP	RPI y/y	4.2%	4.5%	4.4%
13-Feb-07	17:00	EUR	Industrial Production m/m	1.0%	0.4%	0.3%
13-Feb-07	17:00	EUR	GDP q/q (p)	0.9%	0.6%	0.2%

MACD(12,26,9) 0.198 0.174

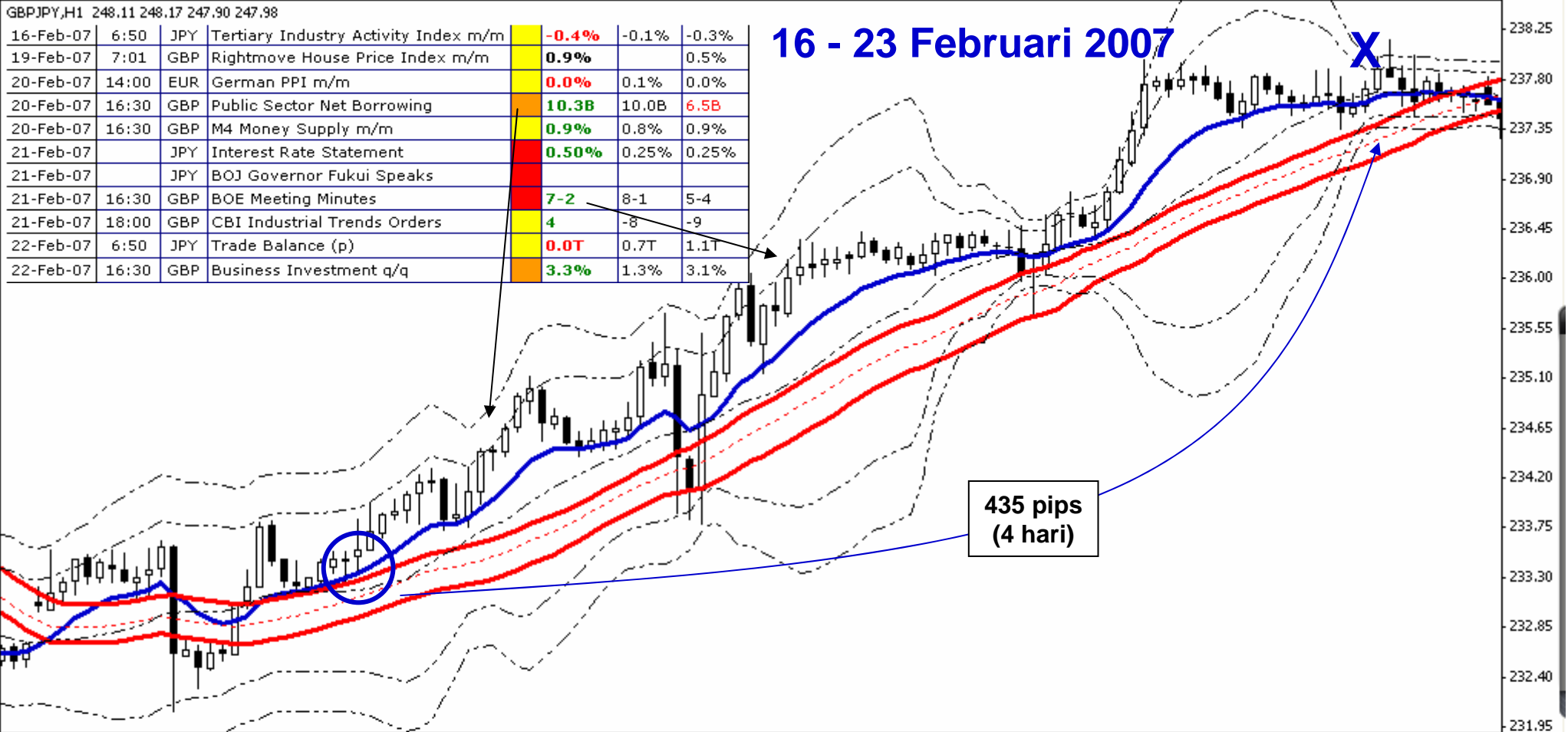


13 Feb 2007 13 Feb 23:00 14 Feb 07:00 14 Feb 15:00 14 Feb 23:00 15 Feb 07:00 15 Feb 15:00 15 Feb 23:00 16 Feb 07:00 16 Feb 15:00 19 Feb 01:00 19 Feb 09:00 19 Feb 17:00 20 Feb 01:00 20 Feb 09:00 20 Feb 17:00

GBPJPY,H1 248.11 248.17 247.90 247.98

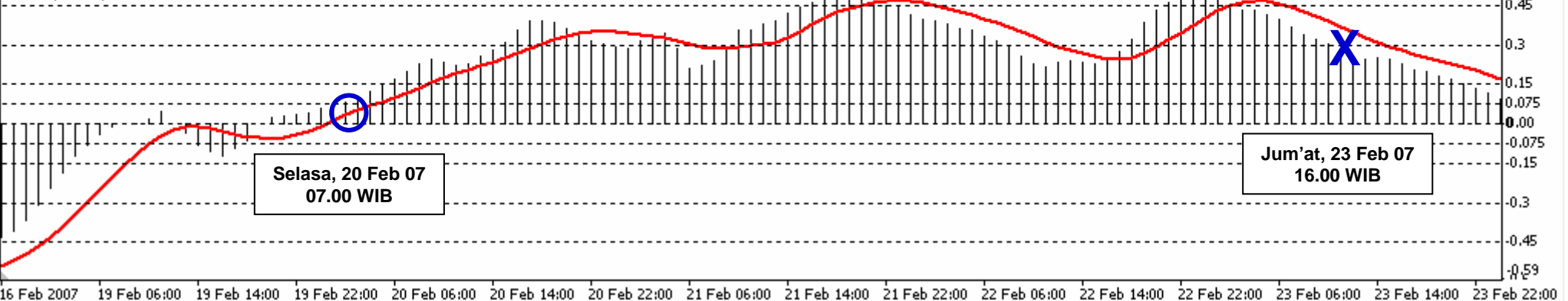
16-Feb-07	6:50	JPY	Tertiary Industry Activity Index m/m	-0.4%	-0.1%	-0.3%
19-Feb-07	7:01	GBP	Rightmove House Price Index m/m	0.9%		0.5%
20-Feb-07	14:00	EUR	German PPI m/m	0.0%	0.1%	0.0%
20-Feb-07	16:30	GBP	Public Sector Net Borrowing	10.3B	10.0B	6.5B
20-Feb-07	16:30	GBP	M4 Money Supply m/m	0.9%	0.8%	0.9%
21-Feb-07		JPY	Interest Rate Statement	0.50%	0.25%	0.25%
21-Feb-07		JPY	BOJ Governor Fukui Speaks			
21-Feb-07	16:30	GBP	BOE Meeting Minutes	7-2	8-1	5-4
21-Feb-07	18:00	GBP	CBI Industrial Trends Orders	4	-8	-9
22-Feb-07	6:50	JPY	Trade Balance (p)	0.0T	0.7T	1.1T
22-Feb-07	16:30	GBP	Business Investment q/q	3.3%	1.3%	3.1%

16 - 23 Februari 2007



435 pips
(4 hari)

MACD(12,26,9) 0.198 0.174



Selasa, 20 Feb 07
07.00 WIB

Jum'at, 23 Feb 07
16.00 WIB

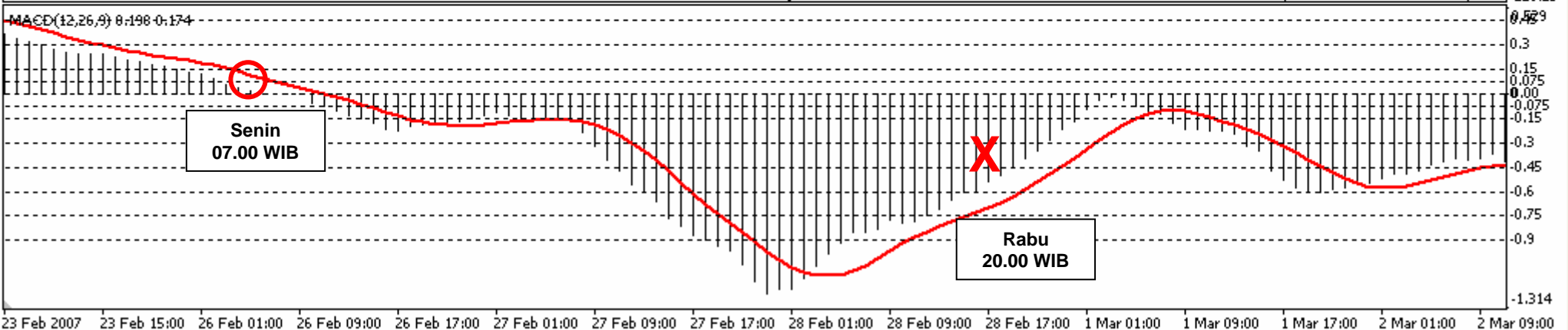
16 Feb 2007 19 Feb 06:00 19 Feb 14:00 19 Feb 22:00 20 Feb 06:00 20 Feb 14:00 20 Feb 22:00 21 Feb 06:00 21 Feb 14:00 21 Feb 22:00 22 Feb 06:00 22 Feb 14:00 22 Feb 22:00 23 Feb 06:00 23 Feb 14:00 23 Feb 22:00

GBPJPY,H1 248.11 248.17 247.90 247.98

23 Feb – 2 Maret 2007

555 pips
(3 hari)

23-Feb-07	6:50	JPY	All Industries Activity Index m/m	0.0%	0.0%	-0.2%
23-Feb-07	6:50	JPY	CSPPI m/m	0.6%	0.2%	0.2%
23-Feb-07	16:30	GBP	GDP q/q (r)	0.8%	0.8%	0.7%
23-Feb-07	16:30	GBP	Total Car Production 3m/3m	1.4%		1.5%
23-Feb-07	16:30	GBP	Index of Services 3m/3m	1.0%	0.8%	1.0%
26-Feb-07		JPY	BOJ Governor Fukui Speaks			
26-Feb-07	12:00	JPY	BOJ Meeting Minutes			
27-Feb-07	16:30	GBP	BBA Mortgage Approvals m/m	37.8K	40.0K	45.5K
28-Feb-07	6:30	JPY	Manufacturing PMI	53.0		53.4
28-Feb-07	6:50	JPY	Industrial Production m/m (p)	-1.5%	-1.8%	0.9%
28-Feb-07	6:50	JPY	Retail Sales y/y	-0.8%	0.2%	-0.2%
28-Feb-07	6:50	JPY	Large Retailers' Sales y/y	-0.4%	-1.0%	-2.4%
28-Feb-07	12:00	JPY	Housing Starts y/y	-0.7%	4.5%	10.2%
28-Feb-07	14:00	GBP	Nationwide House Prices m/m	0.7%	0.5%	0.3%
28-Feb-07	17:30	GBP	Consumer Confidence	-8	-8	-7



23 Feb 2007 23 Feb 15:00 26 Feb 01:00 26 Feb 09:00 26 Feb 17:00 27 Feb 01:00 27 Feb 09:00 27 Feb 17:00 28 Feb 01:00 28 Feb 09:00 28 Feb 17:00 1 Mar 01:00 1 Mar 09:00 1 Mar 17:00 2 Mar 01:00 2 Mar 09:00