

This is free.

Time Frame: M15

Pair: EURUSD

TP:  $\infty$

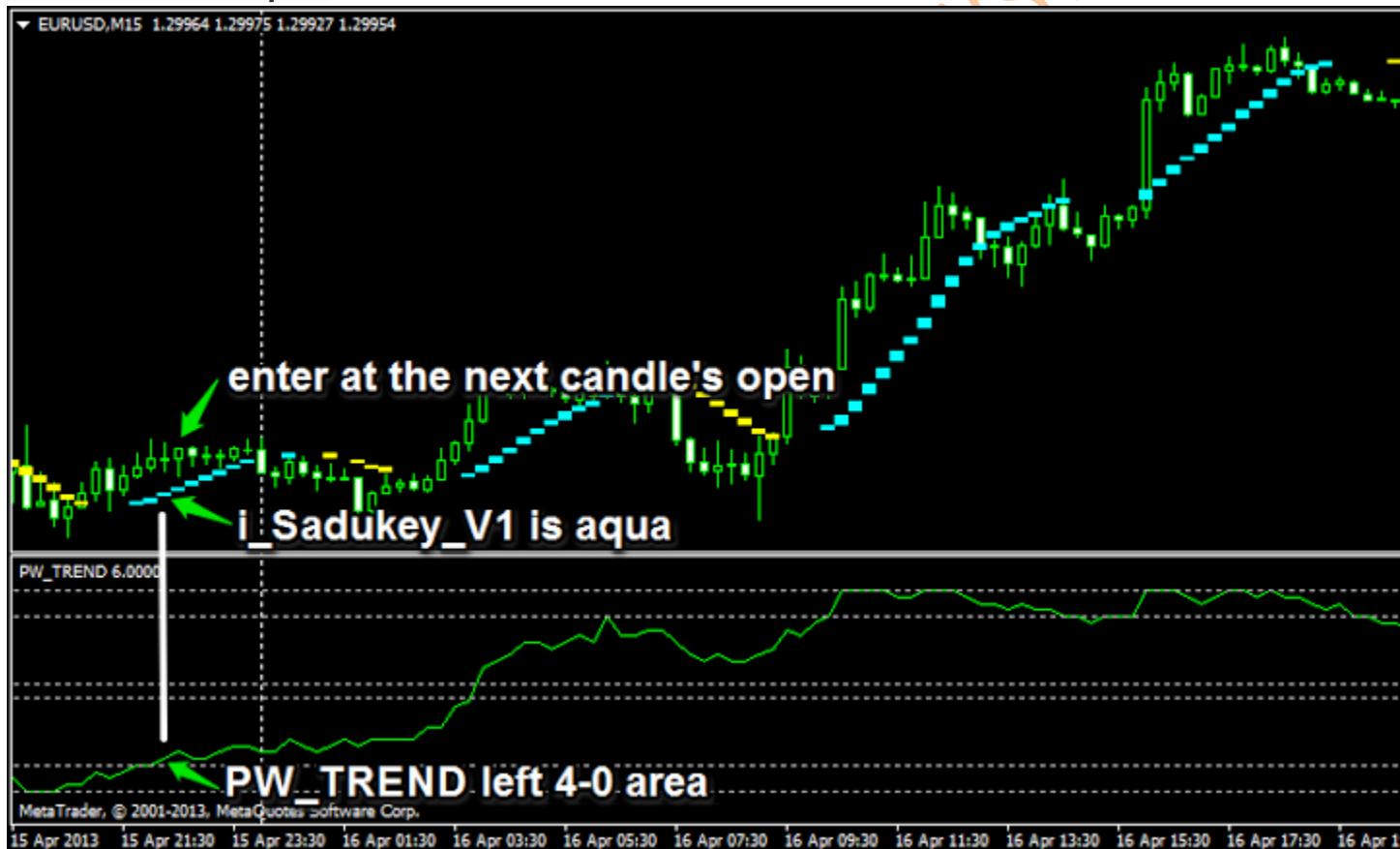
SL: 100 pips

**Buy conditions in the following order:**

**1. PW\_TREND left 4-0 area upwards**

**2. i\_Sadukey\_V1 is color aqua**

**3. Wait for a candle to close where conditions 1 and 2 are visible. Place your entry at the next candle's open.**

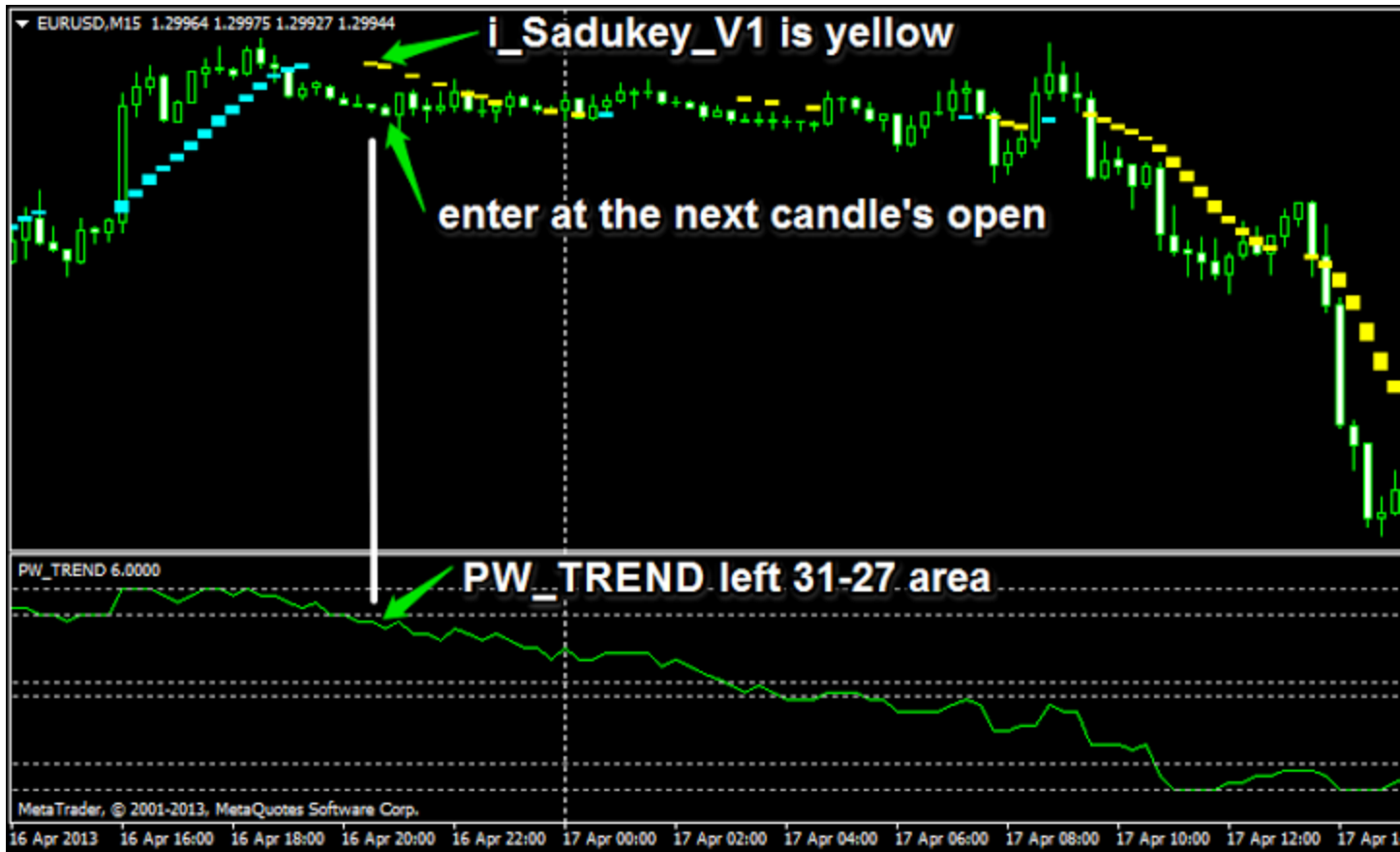


**Sell conditions in the following order:**

**1. PW\_TREND left 31-27 area downwards**

**2. i\_Sadukey\_V1 is color yellow**

**3. Wait for a candle to close where the conditions 1 and 2 are visible. Place your entry at the next candle's open.**

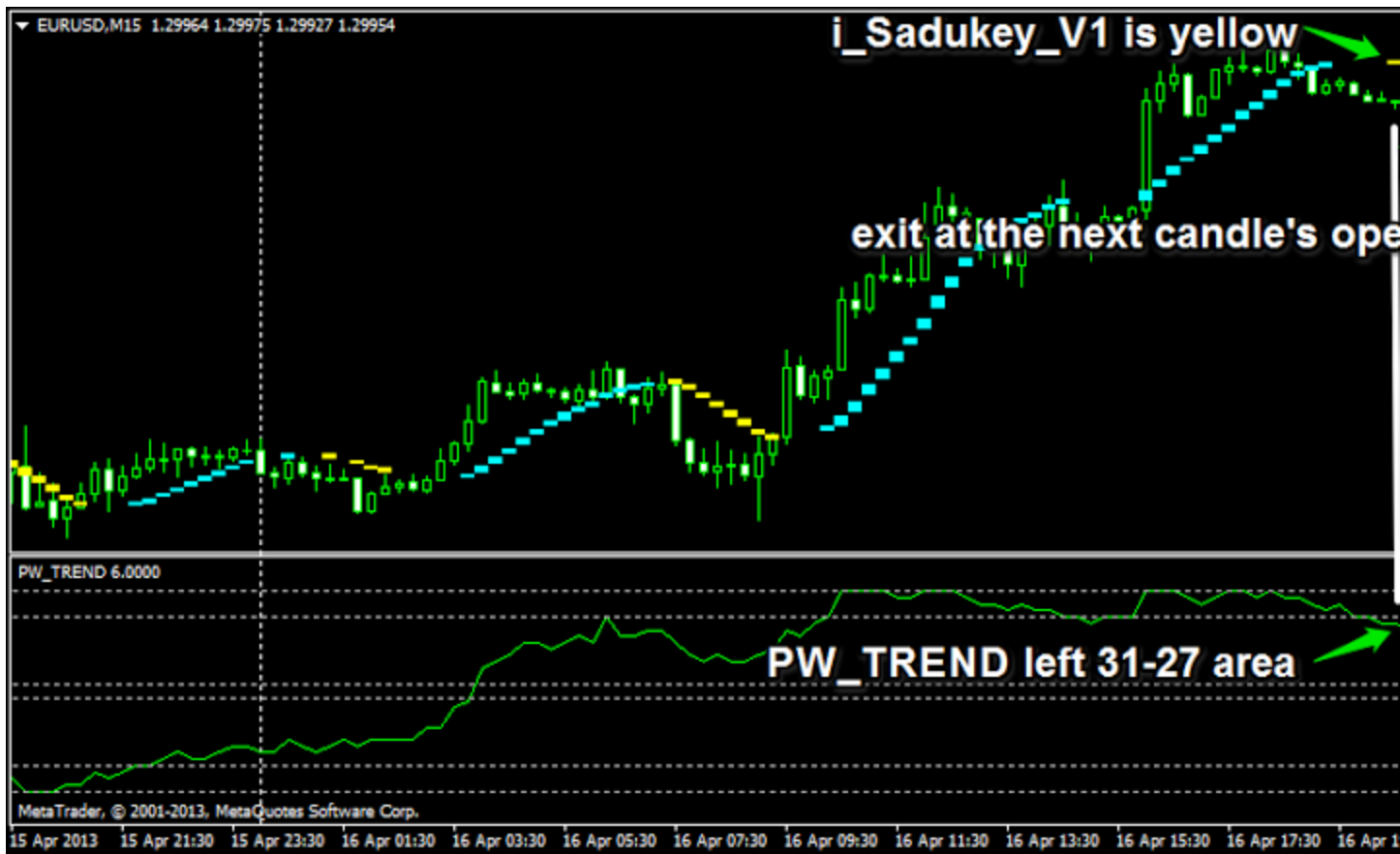


### How to Exit

- When the opposite conditions appear.

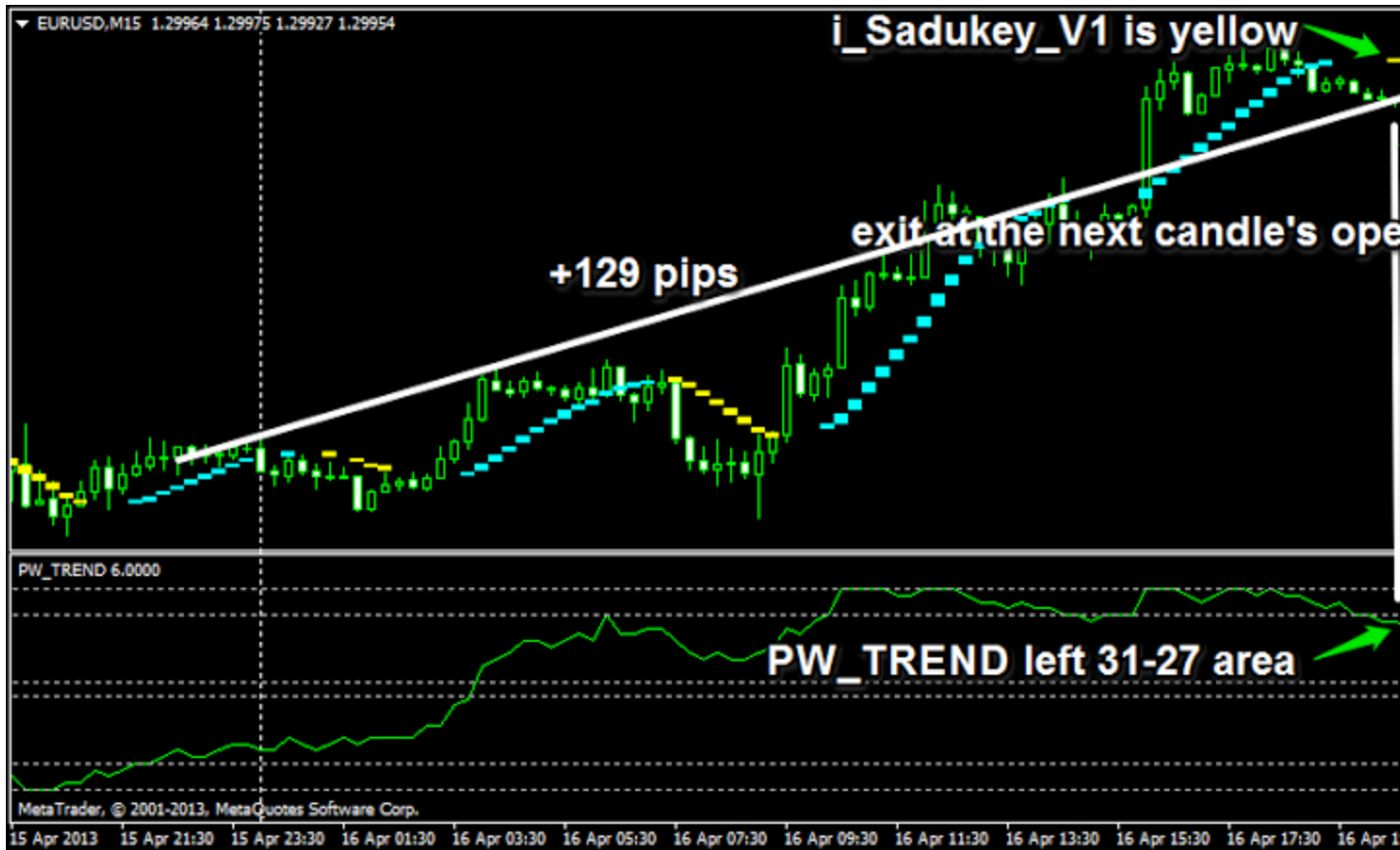
Exit from a long position example:

THIS IS A FREE SHARE



Profit

THIS IS A FREE SHARE



The above is an example of this system in a good time trading but when in not very good, here it is:

When PW\_TREND went back to either 31-27 or 4-0 area after just leaving from it.

THIS IS A FREE SHARE



If PW\_TREND went back to either 31-27 or 4-0 area after just leaving from it, set your position's price as its take profit to break even. Eg. Position's Price: 1.30480, set Take Profit to 1.30480.

THIS IS A FREE SHARE



Every time the buy or sell conditions appear, continue to open positions. Like in the above when PW\_TREND went back.... illustration, you can see that a valid signal happened while you still have another position opened and if position was placed according to that valid signal, you would gain +33 pips while the other position break-even.

-----  
 Here's another Profit illustration

THIS IS A FREE SHARE TRADING



Additional note: 4-0 area is between 4.000 and 0.000. If the green line is only 4.000, it is not considered in the 4-0 area. It should be less than 4.000. Same goes for the 31-27 area. If the green line is only 27.000, it is not considered in the 31-27 area. It should be more than 27.000

I was only able to test this system from April 9, 2013 to this date since the indicator PW\_TREND can't seem to load in an offline chart.

Both indicators don't repaint after its bar or candle closes.

Cheers!

Written [redacted]  
 Merchips [redacted]