



## **Pip Brains User Manual**

**Part 1: Recommended Broker**

**Part 2: Installation**

**Part 2b: Troubleshooting**

**Part 3: Settings**

**Part 4: Risk**

## Part 1: Recommended Broker

Pip Brains will work on any Metatrader 4 broker, but there are ones that perform better than others. Many people don't realize, but there are many important factors that come into play when running an EA. The most important factors to look for are spreads, execution time, reputation, deposit/withdraw process, and account types.

**My #1 recommended broker** to run Pip Brains on is [lamFX](http://www.pipbrains.com/lamFX), and here is why.

Go to <http://www.pipbrains.com/lamFX>

**STP (Straight Through Processing):** An "STP" firm such as [lamFX](http://www.pipbrains.com/lamFX) offers complete transparency, superior execution, and anonymity. This is made possible as a result of Direct and Competitive market "Bids and Offers" allowing client orders to be executed automatically and immediately through our Market network. This allows for a trading environment with no re-quotes and no bias against any trader or trading system including automated systems which include scalping.

[lamFX](http://www.pipbrains.com/lamFX) is proud to provide our clients with a trading environment with no re-quotes and no bias against any trader or trading system including scalping automated systems.

**Free VPS Account:** [lamFX](http://www.pipbrains.com/lamFX) traders receive FREE VPS hosting (regular price of \$65/month value) for MetaTrader and Expert Advisors.

A Virtual Private Server (VPS) very simply is a service that enables a trader to have his or her trading platform hosted remotely. This connection avoids down time that can be caused by dropped Internet connections and power outages.

In these days of lightning fast order execution, down time of even seconds can cost the trader real money. As a result, a VPS has become a necessary tool for the trader's trading arsenal. **We take into account the growing need for automated trading systems for the Retail Market, and its lag behind more mainstream development (Operating Systems, Personal Media, etc).**

[lamFX](http://www.pipbrains.com/lamFX) VPS hosting package give our clients real-time access to their individual accounts. This gives you the ability to view, manage and trade in real-time through [lamFX](http://www.pipbrains.com/lamFX) and host live Expert Advisors.

**Reputation:** [lamFX](http://www.pipbrains.com/lamFX) is located in the U.S.A and has held a strong reputation since their start. I have traded with them for over 2 years, and not once have I ever had a problem, delay, or broker manipulation with my trading like other brokers like to do. I've transferred and traded

thousands and thousands of dollars to and from [lamFX](#) in complete confidence for 2 years and running.

**Spreads:** [lamFX](#) spreads are competitive with some of the lowest spreads in the industry. You will see a bit of spread fluctuation on standard accounts during certain hours sometimes, but it is nothing of concern compared to what other brokers like to call fluctuation.

**Execution Time:** Very important factor when it comes to automated trading. Sometimes the slightest delay or requote can mean a world of difference with a trade. [lamFX](#) has proved to be one of the best when it comes to this aspect in comparison to some other brokers I have used in the past.

**Deposit/Withdraw Process:** [lamFX](#) supports many deposit and withdraw methods including bank wires, local deposit, cheques, credit card, liberty reserve, alert pay and more. Their process time is usually within 48 hours from experience.

**Account Types:**

Micro	Standard
<ul style="list-style-type: none"><li>• <u>Micro Account:</u> 0.05 Lot = \$5,000.00, 0.1 Lot = \$10,000.00, 1.0 Lot = \$100,000.00</li><li>• Minimum deposit for micro account is \$500 USD<ul style="list-style-type: none"><li>• 100:1 to 200:1 Leverage</li></ul></li></ul>	<ul style="list-style-type: none"><li>• <u>Standard Account:</u> 1.0 Lot = \$100,000.00, 0.1 Lot = \$10,000.00</li><li>• Minimum deposit for standard account is \$2,500 USD<ul style="list-style-type: none"><li>• 100:1 to 400:100 Leverage</li></ul></li></ul>

Go to <http://www.pipbrains.com/lamFX>

## Part 2: Installation

Installing the Pip Brains EA's is extremely quick and easy. All you have to do is copy both PipBrains\_EURUSD.ex4, and PipBrains\_USDCHF.ex4 files to your Metatrader 4 experts folder. If you are using IamFX as your broker, your folder location should be something like this  
**C:\Program Files\IamFX MT4\experts**

Then inside that experts folder, there will be another folder called libraries. You will need to copy the **PipBrains.dll** to this folder.

Once you have all 3 files copied to these directories, you can now run that Metatrader 4.

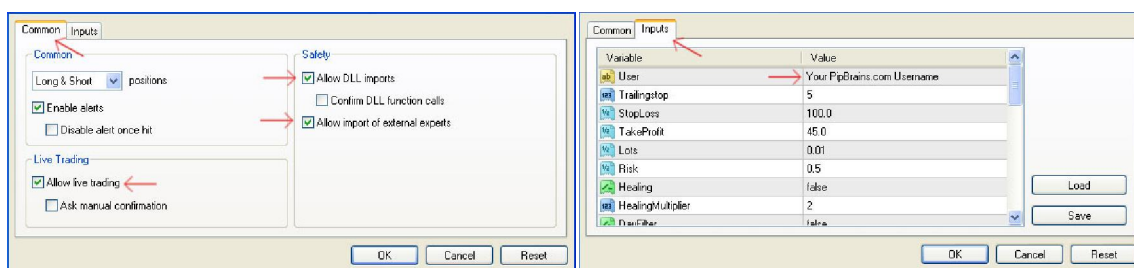
If you don't have a Navigator box open on the left hand side of MT4, press Ctrl + N to open it. You will see a tree list that may or may not already be expanded. Locate the Expert Advisors branch, and expand it if it's not already. There you should see the Pip Brains expert advisors for the 2 supported currency pairs.

You can now open the charts you want to run (you don't have to run both!).

**EURUSD, USDCHF**

Make sure to set the **timeframe to H1** for all of them.

Once you get the charts open, drag and drop one of the Pipbrains EA's from the navigator box onto its respective chart. A popup will appear that will look like either of the two images below.



## Part 2b: Troubleshooting

**Could Not Authorize License Error** – Means 1 of 4 things;

1. You didn't copy the PipBrains.dll into your C:\Program files\Metatrader\experts\libraries
2. You didn't check mark the Allow dll imports in MT4 under tools, options, expert advisors.
3. You entered the wrong username into PipBrains EA user setting.
4. You entered the wrong account number in your Pipbrains.com member page.

If you have Pipbrains fully authorized and it's not trading, try the following:

1. Toggle ECN to FALSE or TRUE depending on its current setting and give it 24 hours to make a trade.
2. Try changing the default Lot size of 0.01 to 0.1 as your broker may not allow micro lots.
3. Check your history and experts tab for errors.

## Part 3: Settings

Setting	Description
Global Settings (Affect All 3 Strategies)	
User	Your Pipbrains.com user name
TakeProfitPCT	Closes all open trades when profit reaches set % of your balance.
tradeSunday - tradeFriday	Set the days to trade on TRUE and the days to stop to FALSE.
StopDayMonth	Stop trading for the rest of the month on this date number.
HourFilter	TRUE to use an hour filter, FALSE to trade 24 hours.
GMTOffset	If HourFilter = TRUE, you will need to set this to your brokers GMT.
startHour	Hour to start trading.
endHour	Hour To Stop Trading.
Strategy 1 Settings	
useStrategy1	Set to TRUE to use strategy 1, FALSE to turn it off.
Lots	Starting Lot size for all strategy 1 trades.
Risk	0.1 being lowest, 10 being highest.
MaxOrders	Max number of orders that can be open total. Includes all 3 strats.
Slippage	Amount of pips the price is allowed to move while opening order.
MagicNumber	Strategy 1 Magic Number to differentiate trades.
Strategy 1 Indicator Settings (Advance Version Only)	
Strategy 2 Settings	
useStrategy2	Set to TRUE to use strategy 2, FALSE to turn it off.
UseMoneyManagement	Let Pipbrains control the lot size depending on your equity.
Risk2	0.1 being lowest, 10 being highest.
Lots2	If MM is off, this will be the starting lot size of all Strategy 2 trades.
MagicNumber2	Strategy 2 Magic Number to differentiate trades.
Slippage2	Amount of pips the price is allowed to move while opening order.
Strategy 3 Settings	
useStrategy3	Set to TRUE to use strategy 3, FALSE to turn it off.
Lots3	Starting lot size for Strategy 3 trades.
maxLotSize	The max starting lot size.
Multiplier	The multiplier used for the sequence of 4 martingale trades.
Multiplier3	Multiplied lot size for additional martingale trades.
MagicNumber3	Strategy 3 Magic Number to differentiate trades.

#### Part 4: Risk

Risk	Strategy 1 Risk	Strategy 2 Risk
Low Risk	0.05	0.5
Medium Risk	0.1	1.0
High Risk	0.2	2.0

Strategy 3 does not have a risk setting, so instead we control the risk by the lots and multiplier.

Strategy 3 Risk	Strategy 3 Lots	Strategy 3 Multiplier
Low Risk	0.01 or 0.1	1.3
Medium Risk	0.02 or 0.2	1.6
High Risk	0.03 or 0.3	2.0