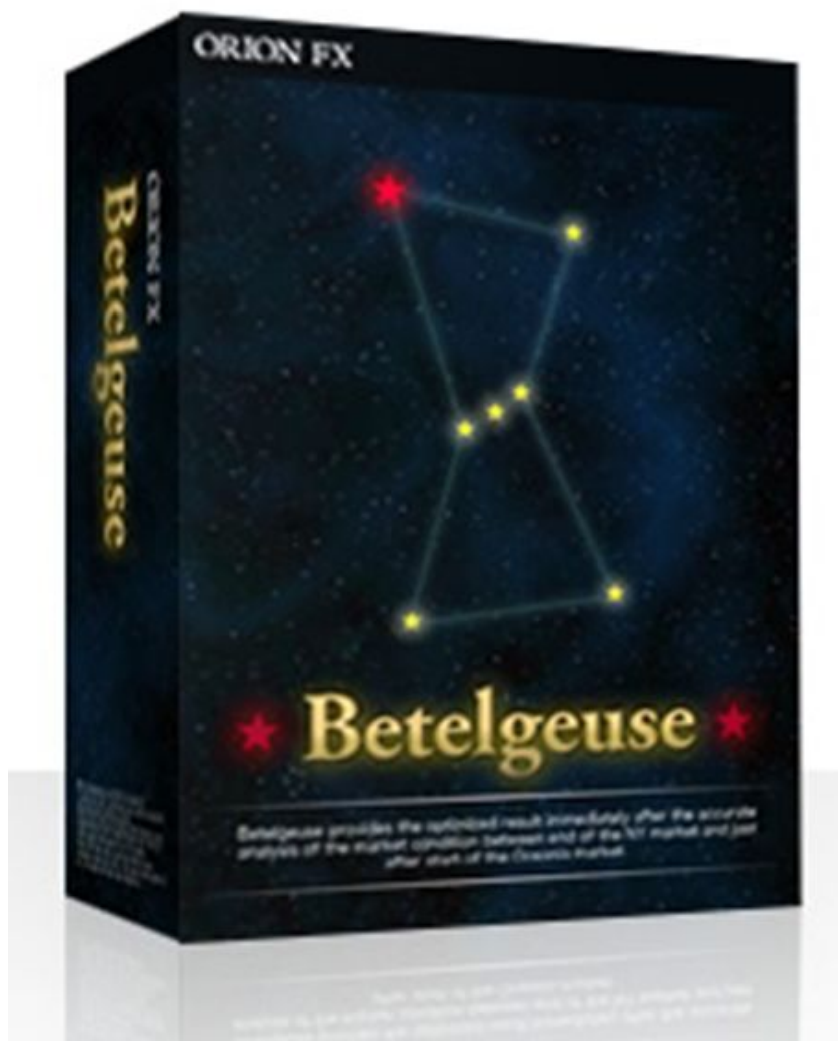


*Expert Advisor  
Betelgeuse\_Ver1.2  
Manual*



***Rio\_Entertainment\_inc***

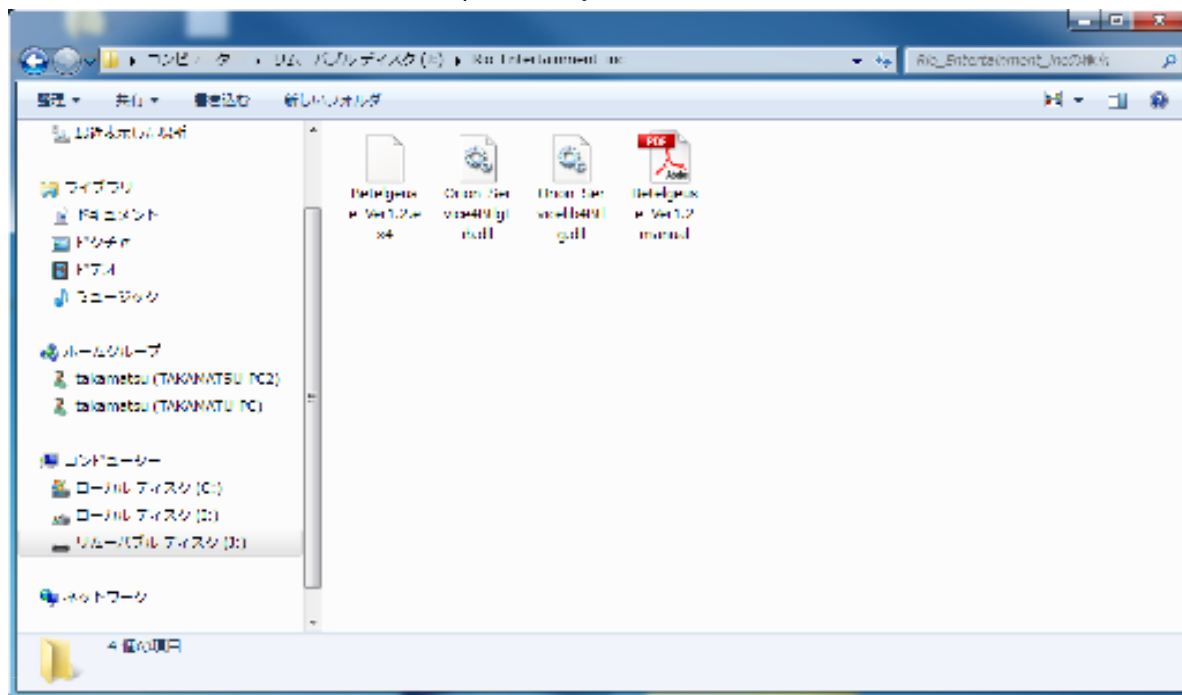
***60 Market Square, Belize City,***

***[ea\\_support@rioentertainment.biz](mailto:ea_support@rioentertainment.biz)***

## Betelgeuse\_Ver1.2 Operation Manual

### 1. Setup

(1) Extract "OFXBTLG12\_EURUSD.zip" file to your local folder.



Contents in the extracted file (4 files)

[Betelgeuse]

Betelgeuse\_Ver1.2.exe

[DLL file]

Orion\_Service4BtlgLib.dll

Orion\_ServiceLib4Btlg.dll

[Operation Manual]

Betelgeuse\_Ver1.2manual

Please check the contents above are included in the Zip file.

(2) Copy files to the respective folders.

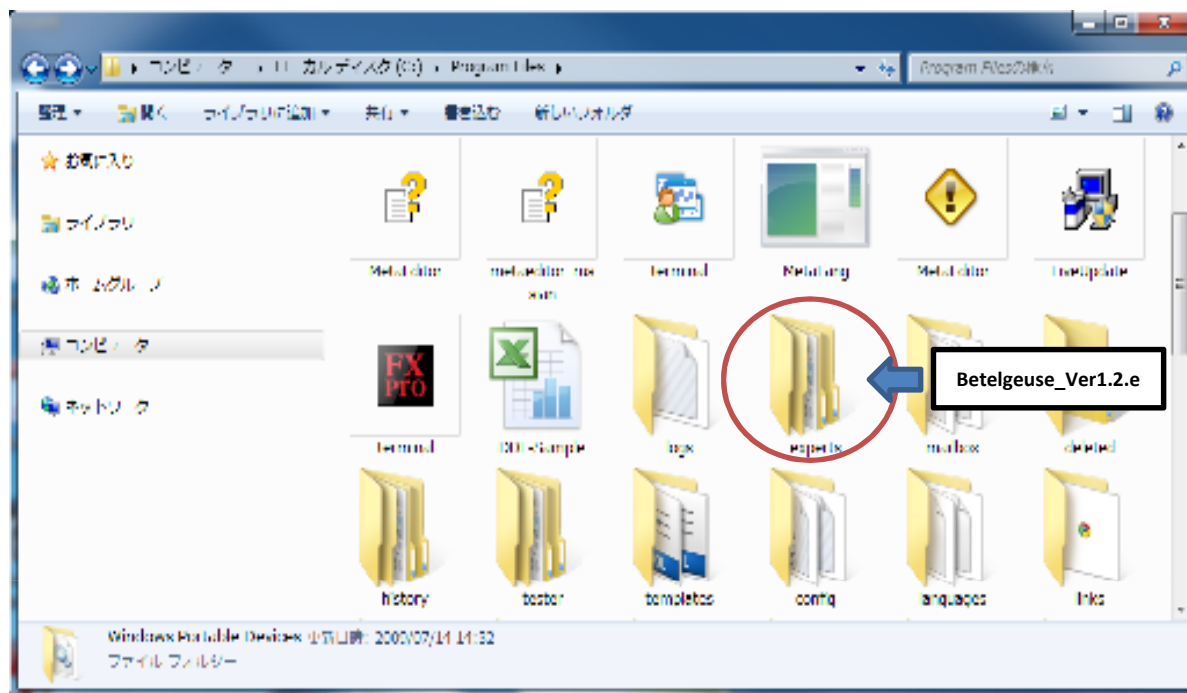
For example, this is the case of "Fxpro".

Please copy files to respective folders as follows.

Copy "**Betelgeuse\_Ver1.2.ex4**" to the following folder.

[MT4 installed folder]¥experts

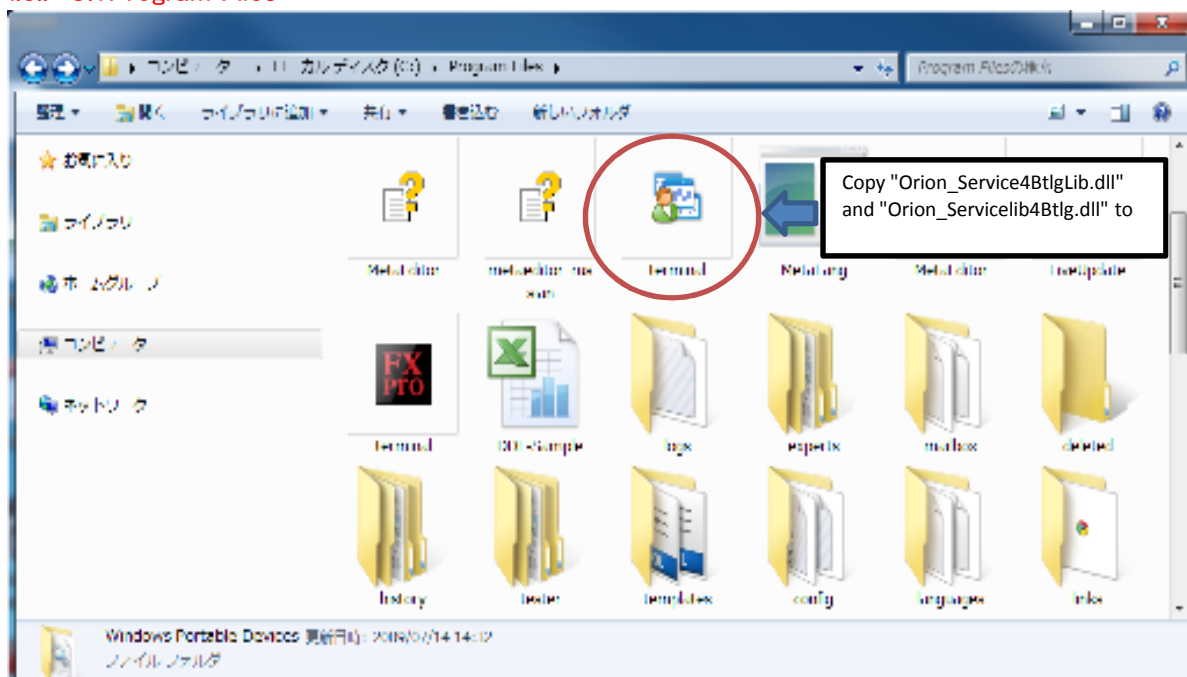
i.e.. C:¥Program Files¥experts



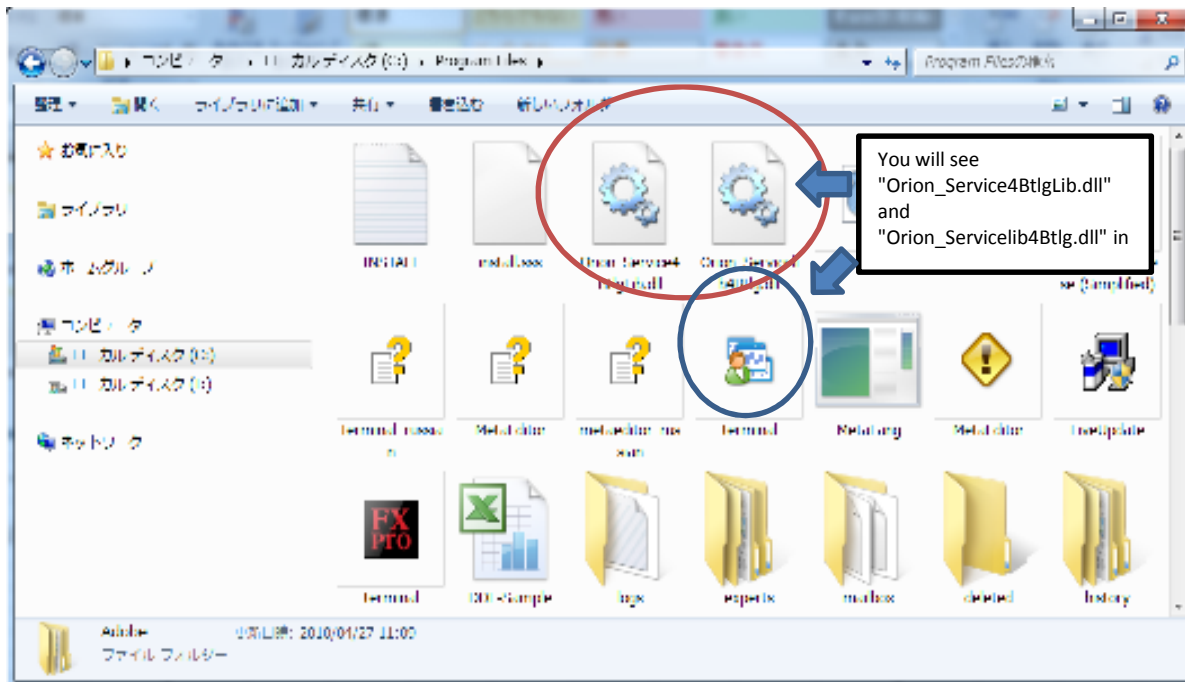
Copy "**Orion\_Service4BtlgLib.dll**" and "**Orion\_Servicelib4Btlg.dll**" to the path where "terminal.exe" is located.

[MT4 installed folder]

i.e.. C:¥Program Files



You will see "Orion\_Service4BtlgLib.dll" and "Orion\_Servicelib4Btlg.dll" in the same path where "terminal.ex is located.

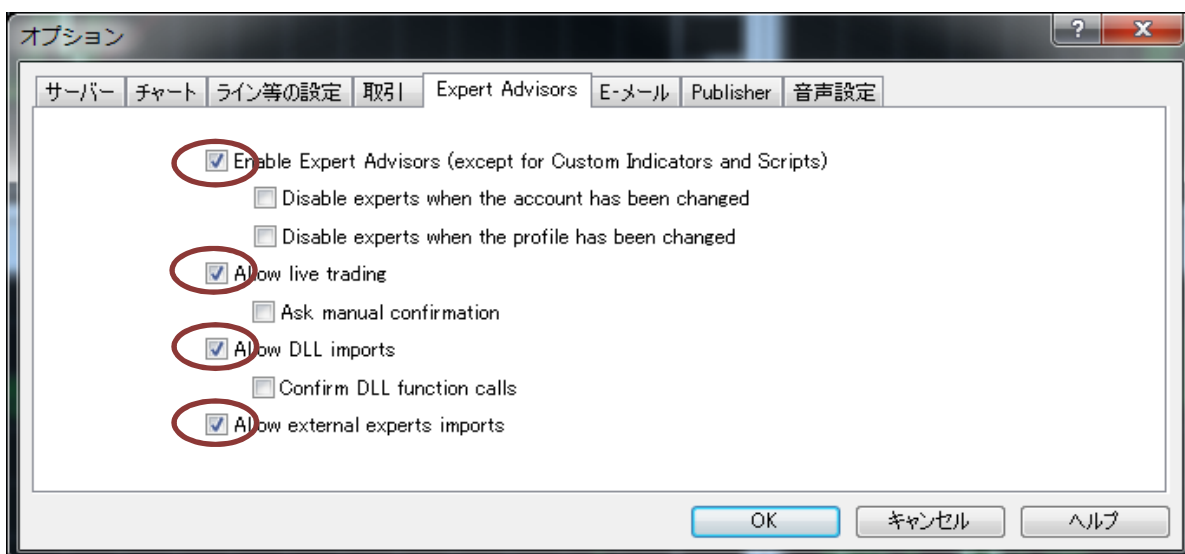


## 2. Run the Betelgeuse

(1) Run the MT4 which "Betelgeuse\_Ver1.2" is set.

(2) Confirm the circled items in the figure below are checked at [Tool(T)] -> [Option(O)] -> [Expert Advisors].

(If [Expert Advisors] box on the tool bar is red, click it and turn it green.)

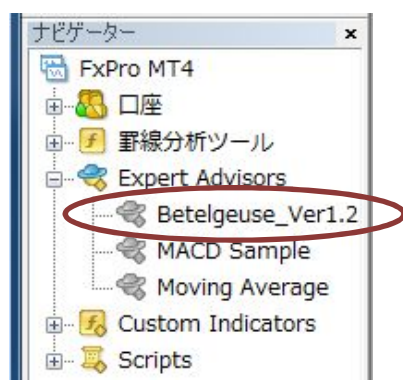


(3) Open the **EURUSD** chart which “Betelgeuse\_Ver1.2” to be run.  
File(F) -> New Chart(N) -> EURUSD

(4) Set **EURUSD** chart to five minutes scale.

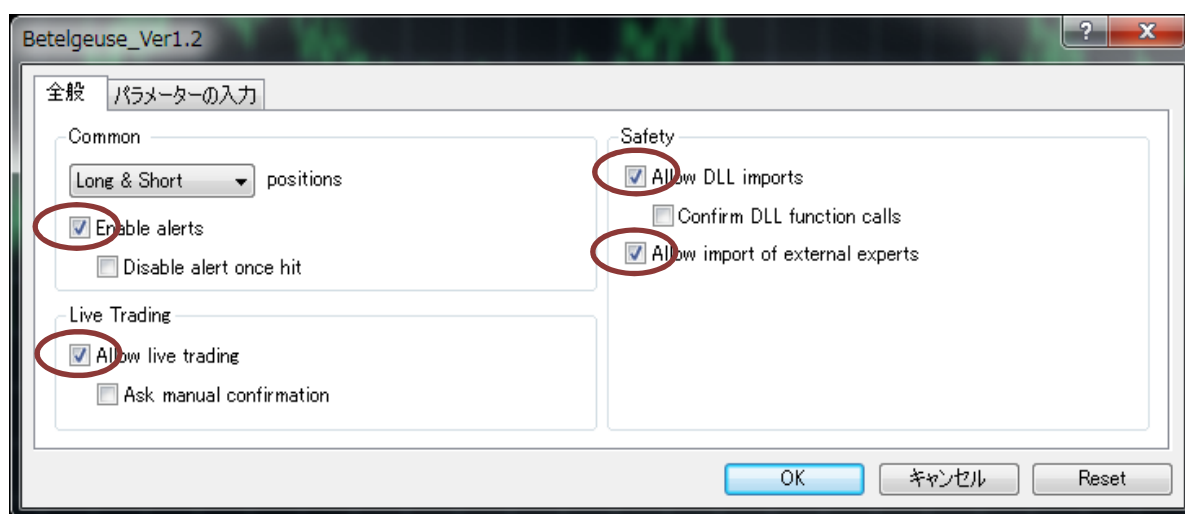
(5) Show navigator window by [View(V)]→[Navigator(Ctrl+N)] on the MT4 tool bar.

(6) Show installed EA name by double-clicking [Expert advisors] or clicking [+] mark in Navigator window.  
You will see “Betelgeuse\_Ver1.2” in the list.

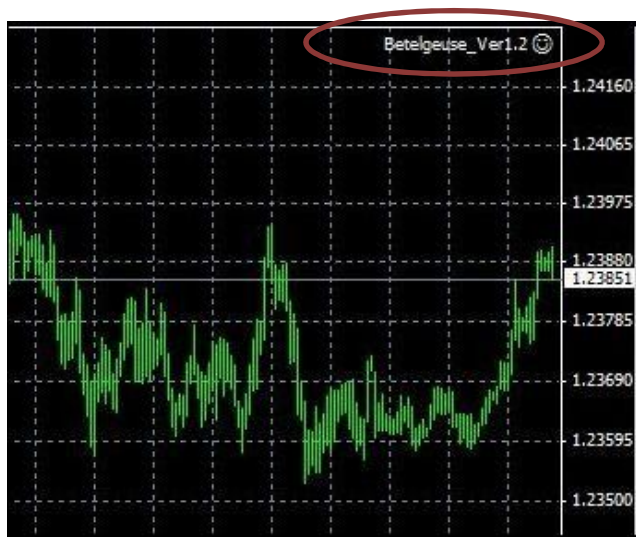


(7) Double-click “Betelgeuse\_Ver1.2” or drag “Betelgeuse\_Ver1.2” to the 15 minutes scale chart, or click mouse’s right button and choose [Show on chart].  
(properties pop-up window will be displayed.)

(8) On the pop-up window for properties, confirm the checks on the red circled mark in the [General] tab.  
You can change parameters if you want, and click [OK] to finish the properties.



(7) The setting completed if you can see the "Betelgeuse" name and smiley on top right of the chart. Betelgeuse\_Ver1.2 is working properly.



\* If the smiley is not shown, please click "Expert Advisors" on top left of the window to turn the mark from



(If you see not smiley but :<, the Betelgeuse is not set/operated properly. Please double check the setting.)

### 3.Parameters

You can change the parameters as follows even when the Betelgeuse is running. Click mouse's right button -> [Expert Advisor] -> [Properties]

#### GMT

This function adjusts the gap of the broker's server time and this Betelgeuse's GMT. Please refer the following brokers' GMT settings. Please ask your broker's contacts for your broker's GMT settings.

	Summer	Winter
FXDD	3	2
Alpari uk	2	1
Forex.com	1	0
Fxpro	3	2

#### Open\_Hour

You can set opening hour for the trading date. You have to set the open hour based not on your local time but on GMT.

#### Close\_Hour

EA will run until the time set here. EA will keep running for your current position regardless of this figure. (You can manage closure of your position with this figure, but you cannot set the new

### **LotsOptimized**

TRUE : Trade with the figures that set automatically based on the valid margin and "Leverage".

FALSE : Trade with the figures that you entered in "Lots".

### **LotsSize**

This parameter is valid only when "LotsOptimized = FALSE".

In case of "LotsOptimized=FALSE", order will be placed with the Lots size set here.

### **Leverage**

RISK percentage. When "LotsOptimized=true", make calculation of order size based on this figure, available margin and MaxTrades figures.

### **StopLoss**

Close the order when loss increases by position matches the Pips as the same StopLoss figure. (EA may automatically make loss cut before reaching this figure.)

### **Takeprofit**

Order will be closed when TakeProfit matches Pips or achieve more profit. (EA may automatically take profit before reaching this figure.)

### **Slippage**

Acceptable range of gap of trade rate when ordered.

### **MaxSpread**

Set maximum spread for trading in case of broker with dynamic spread.

### **OrderComment**

Comment on order. (Default is Betelgeuse\_Ver1.22)

### **MagicNumber**

Default number is "1282865600". Please enter appropriate figures when the other EA is used.

### **ID\_srv**

Please enter ID issued when you purchased the Betelgeuse.

\* Detailed information follows.

### **Pw\_srv**

Please enter password issued when you purchased the Betelgeuse.

\* Detailed information follows.

#### 4. ID and password

This ID and password section is very important and please read this section carefully.

Please use ID which was provided by email when you purchased the license.

Please enter the ID provided in the "ID\_srv" parameter when you received the following message by email.

Thank you for purchasing ORION Inc. FX EA library. Check out has been completed.

Product: Betelgeuse Ver1.2 (EURUSD)

Quantity: 1

Price: 160.00 USD

To download purchased library, please visit:

<https://fxsell.orioninc.jp/>

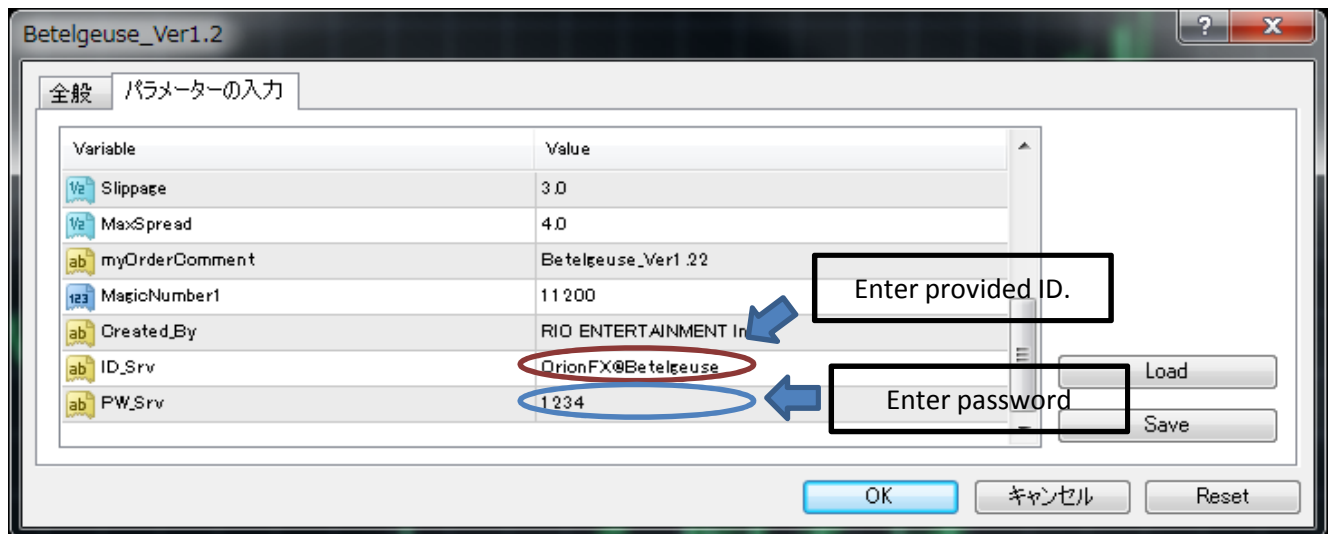
Login the FX service and choose "Purchasing EA library" from the menu.

Click "Download" button from the available list.

To use this EA library, you have to enter ID and password in "ID\_Srv" and "PW\_Srv" respectively as param

ID: OrionFX@Betelgeuse <- Use this ID as "ID\_Srv" parameter.

Password: 1234 <- Use password that you entered for registration.





### \* Note about ID and password

•Please beware the EA account password will be changed immediately when you change password on the website.

•You need multiple licenses to use the same EA on multiple PCs at the same time.  
IDs with “\_” and “digits” i.e. “yourID\_1”, “yourID\_2” will be issued for multiple IDs.

You can view your purchased IDs at “Account List” on the website.

**(The account will be void if you use one account on multiple PCs at the same time.)**

## 5.VPS

### Attention of VPS users

If you are the VPS user, please check the following points to your VPS management company or management team.

•Microsoft Visual C++ 2008 redistributable package (x86)or(x64)

•Microsoft .NET Framework 3.5 or Microsoft .NET Framework 3.5 Service Pack 1

Please check if the above products has been installed.

Our EA requires above two products to run it properly.

To install the above libraries, you can choose “Custom” on WindowsUpdate.

Also, you can use the following installer which checks if the required runtime components has been installed and updates the system automatically.

[http://www.rioentertainment.biz/support/Btrg\\_runtime\\_setup.zip](http://www.rioentertainment.biz/support/Btrg_runtime_setup.zip)

## 5.Tips

We recommend Betelgeuse\_Ver1.2 to be stopped during the following situation.

1. Before/After release of employment statistics (US)
2. Beige Book (US)
3. Easter Holiday (US, Europe)
4. Golden Week Holiday (Japan)
5. New Year Holiday
6. Under extraordinary circumstance i.e. statement by important person immediately after closing of NY mark

**ORION FX**

<http://www.rioentertainment.biz/en/>

**Contact**

[ea\\_support@orioninc.jp](mailto:ea_support@orioninc.jp)