

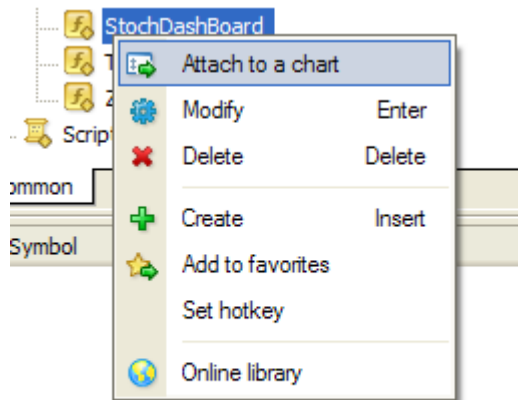
# Stochastic Dash Board Indicator

Copy the file StochDashBoard.ex4 to your Meta Trader **experts\indicators** folder

For example: if your Metatrader 4 is installed at C:\Program Files\ Meta Trader 4

Then the **indicators** folder should be located at C:\Program Files\ Meta Trader 4\expert\indicator

Start Meta Trader 4 and from the top menu, choose Insert -> Indicators -> Custom -> StochDashBoard or drag it from the Navigator Panel on the left hand side onto the chart window



It will display information about the states of Stochastic Indicator on different timeframe in a window below the main chart window.



You can see from the screenshot above all the information about the Stochastic Indicator on different timeframe. You can use these information for your references.

**Good luck**